

# Shoalhaven Orchid Society Inc.

## PATRON

The Hon. Shelley Hancock

## PRESIDENT

Louise Gannon

[lougannon@bigpond.com](mailto:lougannon@bigpond.com)

Ph 0419 241 177

## VICE PRESIDENT

Sandra Ellis

[pollyellis@outlook.com](mailto:pollyellis@outlook.com)

## SECRETARY

Francoise Sikora

[fsfrancoise@gmail.com](mailto:fsfrancoise@gmail.com)

## TREASURER

Tom Gablonski

[tom@gablonski.org](mailto:tom@gablonski.org)

## COMMITTEE

John Clancy; John Clarke, Ron Findlater; John Harriman; Don Hogan; Val Starling

## EDITOR

Lynne Phelan

[phelan.landb@gmail.com](mailto:phelan.landb@gmail.com)

## AFFILIATED WITH

the Australian Orchid Council and the Orchid Society of N.S.W.

[www.shoalhavenorchidsociety.org.au](http://www.shoalhavenorchidsociety.org.au)

Email: [shoalhavenorchidsociety@gmail.com](mailto:shoalhavenorchidsociety@gmail.com)

PO Box 1022 Nowra NSW 2541



Shoalhaven Orchid Society Inc.



*Cymbidium Shoalhaven*

'Touch of Class'

## NEWSLETTER OCTOBER 2022



### GUEST SPEAKER - Change of program

Unfortunately Gavin Curtis is unable to visit. Instead we have a video of **Clive Halls** from Beenak Orchids talking about the culture of **Sarcochilus Orchids** and demonstrating repotting and dividing these lovely native Australian orchids. Hopefully, we should have some sarcs on our benches at this meeting.

## SOCIETY INFORMATION

VENUE: BOMADERRY COMMUNITY CENTRE  
19 BIRRILEY STREET, BOMADERRY.



### NEXT MEETING \*\* It's an evening meeting

**Monday 17 October 7.00pm**

Meeting room is open at 6.30pm

Benching to be **finished** by 7.00pm.

Novice Corner 7.00 – 7.15pm

Popular Vote 7.15 – 7.30pm

Meeting opens 7.30pm.

\* Many hands make for a quick set up/pack up.

### FROM THE EDITOR'S DESK

Hello Members

Another show coming up so get those plants ready and be sure to read all the information so that the show runs smoothly.

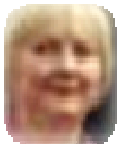
We were short on helpers on the entry table at the Spring Show so, if you are at the show, could you please volunteer for a spell on the raffle table. See Val to choose a spot on the roster. **Lynne**



Our best wishes to any members who are on the sick list. We hope you will soon be back with us. We miss you!

THE SHOALHAVEN ORCHID SOCIETY MEETS ON THE **THIRD MONDAY** OF THE MONTH- at **7.00 PM** IN THE BOMADERRY COMMUNITY CENTRE, 19 BIRRILEY STREET, BOMADERRY.

The Shoalhaven Orchid Society disclaims any liability for losses which may be attributed to the use of any of the material mentioned in this newsletter.



## PRESIDENT'S REPORT

It's nice to see the day temperatures getting warmer as we go further into Spring although the La Nina rain is still with us keeping everything wet. Unfortunately, it has led to the cancellation of our Potting Day (Oct.15<sup>th</sup>) which was due to be held at Ron Findlater's home where it is still very wet and muddy underfoot.

We have looked forward all year to our Society's planned events, not only to learn more about orchids but to socialise with other members, but they have all been cancelled due to the rain.

I wish I could say that I have started my Spring repotting, but I can't as there have been so many unexpected interruptions – that's life! I will have to start soon, or the window of opportunity will be over once Summer hits. Repotting and dividing can certainly be a back-breaking job, but it gives so much pleasure when you see all your plants looking their best.

The latest news on Tom our Treasurer is that he is back to a Shoalhaven Hospital after his second Sydney hospital stay. It will still be a while before we see him at a meeting. I know we all send him our best wishes.

Our October meeting guest speaker, Gavin Curtis, has sent his apologies for not being able to attend. Lynne Phelan has come to our rescue and will show an interesting video of Clive Halls repotting and talking about *Sarcochilus* orchids.

The final show for the year, our October Show, is just around the corner and I look forward to seeing all your lovely flowering orchids on display.

Warm regards,  
**Louise**

### Reminders from Committee

- Potting day on 15 October cancelled due to adverse weather conditions.
- Volunteers are needed to help at the show; see Val at the October meeting.
- You do not need to register your plants before the show.
- You must bench some plant/s or be rostered on to help at the show if you wish to sell plants.

## Current Life Members Shoalhaven Orchid Society

*Mr Stuart Crowther - 1999*  
*Mr Alan Stephenson - 1999*  
*Mr Colin Marstin - 2007*  
*Mr John Webb - 2009*  
*Mrs Lynne Phelan - 2012*  
*Mr Allan Taylor - 2014*  
*Mr Brian Phelan - 2022*



## Books! Books! Books!

**Our society has many great books for you to borrow!!**

**Speak to Robin Gunter who would be delighted to help you**

## Attendance Book

Members and guests must sign the attendance book. This is required for insurance purposes.

***If you don't sign, you're not covered.***

Please sign beside your number given by the society.

## Workshop Novices Corner

**Between 7pm and 7.15pm** newer growers can speak to experienced grower. **October: *John will talk about different potting mixes and mounts.***

Any problem orchid for advice on? (Please bring it in plastic bag if you suspect it has a disease or pest problem.) Remember, there's no such thing as a 'dumb orchid question'!



## WISH LIST

Looking for a special plant??

**Email Lynne** (front page for address) with ....

**Your Name, Phone number & plant name**  
and I will add it to our newsletter.

**See Back Page for your Wishes...**

## IMPORTANT NOTICE

**about your Bishop's discount card**

**A new discount card will be issued when you renew your membership. Please bring your old card to the meeting to exchange for the new card. Treasurer Tom has the new cards.**

## SPRING INTO REPOTTING!

Orchids generally need to be repotted each one or two years. The best time to repot is just after flowering or when new growths, especially roots, appear. For many orchids, this happens in spring. Take advantage of your Bishops' loyalty discount card and stock up on bark and all your potting supplies. Bishops at South Nowra are long term, generous sponsors of our society and the staff is very helpful. With the weather precluding any other garden activity it is great time to do your repotting so be sure to pay them a visit soon.

## Welcome

The society warmly welcomes  
**Robert Ballard from Kiama**  
and returning member, **Barry Jarman, from Callala Bay.** We look forward to sharing our orchidaceous hobby with you.

## OCTOBER ORCHID SHOW

Our show is on 22 October and the Show Information, Show Schedule and Plant Entry forms are included with this newsletter. The heavier show benching cards may be collected at the October meeting. For members who do not have a printer, some entry forms and schedules will also be available. Val Starling will be asking for volunteers to fill the roster. Please consider taking a turn on the entry/raffle table if you are going to be at the show for a couple of hours. Many hands make happy members. **We encourage all members to bench as many plants as possible to ensure a good show.**



Members were very interested in guest speaker, Mitch Kernaghan's, potting demonstration of *Den. speciosums*.

*The Society thanks our generous Sponsors*

**We encourage you to support them.**



WE STOCK AN EXTENSIVE PRODUCT RANGE FOR  
ALL  
YOUR ORCHID NEEDS

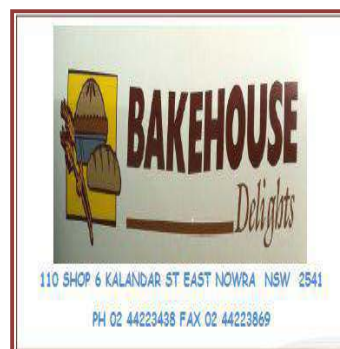
✂ Campbell's Orchid Fertilizer ✂ Clear Phalaenopsis  
Pots  
✂ White and Coloured Labels ✂ Range of Orchid Grow-  
ing Media...  
AND MORE!

Take advantage of your VIP Customer Pricing  
PHONE FOR DELIVERY OR VISIT US AT 21 BELLEVUE ST,  
SOUTH NOWRA

Ph: 4423 2359 Fax: 4423 7180



**SHOALHAVEN  
ZOO**





BENCHING RESULTS		Year 2022	Month September
Class	Orchid Name		Name of Grower
NOVICE			
Australian native hybrid/species	Den. Unknown	V. Starling	
Miscellaneous orchid	Coelogyne Unknown Aerides Unknown	V. Starling V. Starling	
Novice Orchid of the Night	Coelogyne Unknown	V. Starling	
INTERMEDIATE			
Australian native species/hybrid	Den. x suffusum	R. Hahn	
Laeliinae Alliance	Pot. Dal’s Moon ‘Golden Sun’	F. Sikora	
Cymbidium	Cym. Street Tango ‘Ooh Aah’	F. Sikora	
Miscellaneous orchid	Phal. Unknown	R. Hahn	
Intermediate Orchid of the Night	Cym. Street Tango ‘Ooh Aah’	F. Sikora	
OPEN			
Paphiopedilum	Paph. malipoense ‘Hsiao’ x P. hangianum ‘In Charm’	W. Simmons	
Oncidiinae Alliance	Onc. Dowling	B. Phelan	
Dendrobium	Den. Malone’s Fantasy x D. Snow Flake	Y. Young	
Laeliinae Alliance	Catt. Dal’s Dynamite	G. Jonas	
Species	Coelogyne flaccida	L. Gannon	
Australian native hybrid	Den. Eclipse	R. Findlater	
Australian native species	Den. striolatum ‘Ruffles’	L. Phelan	
Cymbidium	Cym. Unknown	G. Jonas	
Open Orchid of the Night	Paph. malipoense ‘Hsiao’ x P.hangianum ‘In Charm’	W. Simmons	
Species of the Night*	Coelogyne flaccida	L. Gannon	
Hybrid of the Night*	Onc. Murray River	B. Phelan	
Marshal’s Choice	Den. Malone’s Fantasy x D. Snow Flake	Y. Young	
Growing Competition	1st. Shayron Wynn, 2nd. Louise Gannon, 1 point to B. Phelan, L. Phelan, K. Wynn, Y. Young.		
* Chosen by Guest Speaker, Mitch Kernaghan.			

## Popular Vote Reminder

All plants benched must have a benching card with the name of the orchid on the front and the owner's name on the back. To avoid benching delays, **please fill in the cards before you come to the meeting.** The template or supplies of the benching card are available from Francoise.

# JUDGING RESULTS FOR SEPTEMBER 2022

CONGRATULATIONS TO ALL



Open Popular Vote.  
Paph malipoense 'Hsiao' x P. hangianum 'In Charm'  
Wayne S

**Paph. malipoense 'Hsiao' x P. hangianum 'In Charm'**  
**Wayne Simmons**



Best Species of Night.  
Coelogyne flaccida  
Louise G.

**Best Species Coelogyne flaccida Louise Gannon**



Oda. Murray River  
Best Hybrid of night.  
Brian P.

**Benching Marshal's Choice**

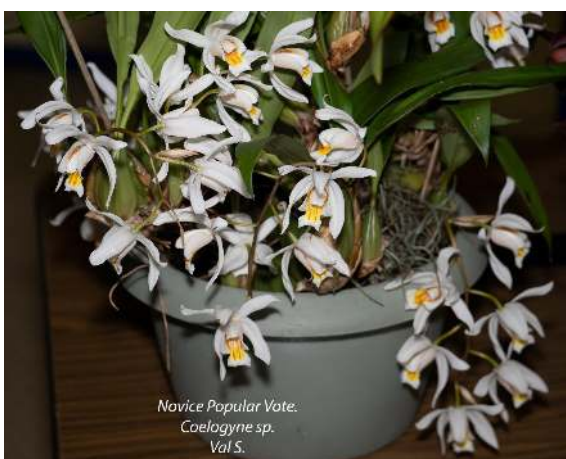
**Den. Malone's Fantasy x D. Snow Flake**

**Yvonne Young**



Spotted by the Benching marshal.  
Den Malones fantasy x Den Snowflake  
Yvonne Y

**Orchid Hybrid of the Night**  
**Oda. Murray River Brian Phelan**



Novice Popular Vote.  
Coelogyne sp.  
Val S.

**Novice Orchid of the Night**  
**Coelogyne Unknown Val Starling**



Intermediate Popular Choice of night.  
Cym. 'Street Tango Ooh Ahh' Francoise S.

**Intermediate Orchid of the Night**  
**Francoise Sikora**

## **Benching/Show Marshal's Report on Winter and Spring Shows**

Firstly, the Winter Show; our first show after Covid (SARS Cov-2) was above expectations. 129 plants were exhibited along with 7 plants on the Display Only table (not owned by members for 6 months). There were 359 visitors to see the one-day show, which was great. The sales table was sold out by 1.30pm and the Show closed at 4.30pm.

What do I say about our new venture in the Bomaderry Community Centre Hall? Great work from our hard-working members.

Now for our Spring Show. A trial run for no pre-show plant registrations proved a complete success. There was only one member without a name on the entry sheet, along with the exhibitor's name missing from some benching cards. There were 10 Open, 5 Intermediate and 2 Novice exhibitors; a total of 17.

In all, 156 plants were exhibited for the show and this was above expectations. The number of visitors is not available, but it was well above that for the Winter Show.

Our Open members will have to pull their socks up as the 5 Intermediate exhibitors filled 2 rows of 5 tables while it took 10 Open growers to fill the same amount of space plus one round table of *Den. speciosum*.

There were problems on the sales table relating to the use of special tags for the sale of NSW native orchids. I believe this problem can be resolved for future shows.

We need more members to volunteer for the entry table and to sell raffle tickets. Many members were at the show for several hours talking to the public and to other members while one member stayed at the raffle table for almost the whole day. Please consider volunteering for the raffle roster at future shows.

All I can say again is, well done members for a mighty good spring show. Also, thanks to our committee and members for set up and pack away.

**Don Hogan**  
**Show Benching Marshal**



**CHAMPION ORCHID**  
**Den. speciosum 'Natstar Best 2004'**  
**Richard Korber**



**Dendrobium Dunokayla**

**RESERVE CHAMPION**

**Den. Dunokayla**

**Ron Findlater**

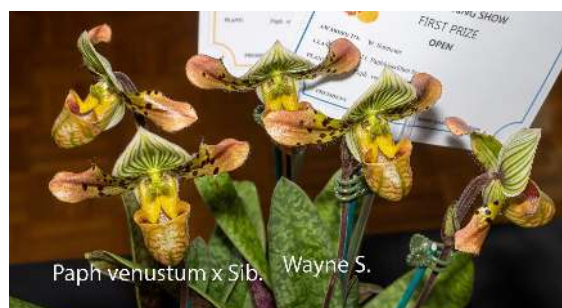




## 2022 SPRING SHOW



**John Clarke's CHAMPION  
ANY OTHER ORCHID**



**Wayne Simmons two Champion paphs.**



Many thanks to  
Yvonne Young for all  
of the photos in this  
newsletter .



**Our wonderful judges**



**An admiring visitor**





# 2022 Shoalhaven Orchid Society

## Society Meetings 2022

**17th October** Clive Halls video presentation on the culture and repotting of *Sarcochilus* orchids.

**21st November** Guest speaker **David Brooks** on Cymbidiums

**19th December** TBA

## Society Shows 2022

SOS Inc. October Show Saturday 22<sup>nd</sup> October

## Society Coming Events

~~Potting Day~~ — October 15th at Ron Findlater's. Sadly due to the soggy conditions underfoot in Ron's shadehouse the potting day has been cancelled for now.

## Other Orchid Events

MUOS Native Orchid Show 8 October Civic Centre, Ulladulla

Southern Orchid Spectacular 7-9 October Sutherland

### COVID RESTRICTIONS

Please observe the following:

1. Sanitise your hands with the hand sanitiser provided when you arrive.
2. Wearing a mask is optional.

**Random act of kindness** - I recently had a problem with the Society computer which I, being a technodinosaur, could not resolve. I headed into Virtual City in Morisons Arcade in Nowra. An hour or more later I had the computer back - all fixed, no charge. That is a business I will be happy to support.

## Growing Competition 2022

Please try to find and bring your growing competition plant each month. If you group them with a distinctive coloured label they are easy to find.

**NOTE:** The benching schedule has changed as some of the growing comp. plants flowered.

**October.** *Laelia anceps* 'Wallbrunn' x *L. anceps* 'Rosminah'

**November.** *Rlc.* Dal's Ambition 'Tara' x *C.* Aloha Case 'Ching Hua'

**December.** *Laelia anceps* 'Wallbrunn' x *L. anceps* 'Rosminah'



*Caladenia*



*Thelymitra*

These are two of the orchids that were in flower on the Mooney Creek track.



often swinging in the air, suspended from one of its tangled roots.

*Plectochilus Kilgra* is grown in a mesh pot which allows lots of air circulation around its roots. It is grown in an unheated shadehouse and the flowers are lightly scented.

## ON THE BENCH IN SEPTEMBER

*Plectochilus Kilgra* (left) is an Australian native hybrid. Its parents are two Australian species, *Sarcochilus falcatus* and *Plectorhiza tridentata*. This hybrid was made in 1988. *Sarcochilus falcatus* (below left), commonly known as the orange blossom orchid, is a small epiphytic or lithophytic orchid that is endemic to eastern Australia. *Plectorhiza tridentata* (below right), commonly known as the tangle orchid, is a twig epiphyte,





# SHOALHAVEN ORCHID SOCIETY SHOW SUPPLEMENT

*Please read carefully*

OCTOBER SHOW Saturday 22 October 2022

BOMADERRY COMMUNITY CENTRE

**The Show Schedule** for our **October** show will be included with this newsletter. Please read the schedule carefully and familiarise yourself with the rules. Also, refresh your memory by reading your Checklist for Preparing and Benching Orchids.

**Raffle** The show raffle is a major fund raiser for our society. Booklets of tickets will be available at the **October** meeting so please try to sell some tickets (**\$1.00 each or 6 for \$5.00**) and return the money and stubs (sold or unsold) at the Show. There will be three prizes:

1<sup>st</sup> prize will be one orchid and a \$50 Bunnings gift card;

2<sup>nd</sup> prize will be a Family Pass to Shoalhaven Zoo;

3<sup>rd</sup> prize will be a \$50 Bunnings gift card.

The raffle is a way that all members can help contribute to the cost of running our show even if they are limited in being able to help in other ways so please help our Society out by selling the tickets and returning them.

**Entry Forms** Your Entry Form is included with your newsletter. Please have it filled in with your plant names and classes and give it to the Show Registrar when you have finished benching your plants.

**Benching on Friday 21<sup>st</sup> October** will take place between **3.00pm and 5.30pm at Bomaderry**. Note that **5.30pm** is the **finishing** time. If possible, please bench your plants yourself. This means finding the right class for your plant on the tables. If you are not sure which is the correct class, please ask **Don Hogan** or another Open grower.

**Labelling** Please check your plant labels and name tags to make sure they are accurate, legible and concealed within the pot.

**Benching Cards** As at our monthly meetings, each plant benched will have a benching card with the class and plant name clearly written on the front and the owner's name on the back. A heavier card will be used for shows and these will be available at the October meeting. Please fill in the cards prior to coming to bench your plants. *If you have benching cards left over from the Spring Show please use them.*

**Helpers** are required for selling raffle tickets, to provide security for our orchids and to be available to talk to the public. Please consider volunteering a couple of hours of your time to support the society. A roster will be circulated at the **October** meeting to enlist helpers.

**Sales Table** Members are reminded that the Society's commission on plant sales is 10%. (15% for sales over \$500.) Orchids, ferns and/or foliage plants **only** can be sold; NO OTHER GARDEN PLANTS PLEASE. Plants for sale should be healthy and free from pests and/or disease. Members may offer exhibited plants for sale, but these cannot be collected until the

end of the show. **For Sale** tags are available from the Sales Table team and members will need to give the Sales Table a list of plants and prices. Members wishing to sell plants on the sales table must either:

- exhibit some plants in the show, OR
- be rostered on to work at the show.

**Sale of native orchids** Members wishing to sell NSW native orchids (species and hybrids) at our shows should refer to the Society's NSW Native Orchid Sales Guidelines. A copy is available from the **Secretary**. Each native orchid must be tagged. These pre-printed tags may be purchased from the **President** or **Treasurer**.



**Advertising posters** will be distributed at the **OCTOBER** meeting for display in local shops/noticeboards. Perhaps place one on your car window if it doesn't block your vision. Please help advertise our Show. Email newsletter members will be sent one which they are free to download for display should they wish to do so.

**Trophies** A reminder for winners of the Champion trophies at the **2019 October** Show to **please return them to the October meeting** cleaned/polished ready to go on the Champions table at the show if they have not already been returned.

**Show sponsors** Our generous sponsors enrich our show by donating prizes. They deserve our support. Check your show schedule and keep the list of sponsors handy so that the next time you need supplies you can support the businesses that support us.

**Opening/closing** The Show will open at 9.00am on Saturday. The scheduled finishing time is **5.00pm**. *Please be on hand to pick up your plants promptly* when the Show closes or arrange for another member to collect your plants.

**Donations** of cakes, slices, sandwiches or biscuits for the volunteer workers would be appreciated.

**Donations** of plants suitable for giving to children who visit our show will also be most welcome.

