

Shoalhaven Orchid Society Inc.

PATRON

The Hon. Shelley Hancock

PRESIDENT

Louise Gannon

lougannon@bigpond.com

Ph 0419 241 177

VICE PRESIDENT

Sandra Ellis

pollyellis@outlook.com

SECRETARY

Francoise Sikora

fsfrancoise@gmail.com

Ph. 0424 165 863

TREASURER

Tom Gablonski

tom@gablonski.org

COMMITTEE

John Clancy; John Clarke, Ron Findlater; John Harriman; Don Hogan; Val Starling

EDITOR

Lynne Phelan

phelan.landb@gmail.com

AFFILIATED WITH

the Australian Orchid Council and the Orchid Society of N.S.W.

www.shoalhavenorchidsociety.org.au

Email: shoalhavenorchidsociety@gmail.com

PO Box 1022 Nowra NSW 2541



Shoalhaven Orchid Society Inc.



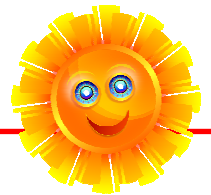
Cymbidium Shoalhaven

'Touch of Class'

NEWSLETTER JUNE 2022



Miltonopsis Lillian Nakamoto 'Tanto' Tom G



REMEMBER,

THIS IS A DAYTIME MEETING. SEE YOU ON SATURDAY, 18 JUNE.

SOCIETY INFORMATION

VENUE: BOMADERRY COMMUNITY CENTRE
19 BIRRILEY STREET, BOMADERRY.

NEXT MEETING Saturday 18 June

Meeting room is open at 9:15am for setting up *

Benching to be **finished** by 10:00am

Novice Corner 10:00am - 10:15am

Popular Vote 10:15am-10:30am

Meeting commences 10:30am

* Many hands make for a quick set up/pack up.

GUEST SPEAKER - Richard Dimon from Sutherland Orchid Society will talk on **Native Orchid Conservation**. Richard currently works at the Botanic Gardens in Sydney but he previously worked on orchid conservation with the Royal Botanic Gardens in Victoria. This is sure to be a very interesting talk so hopefully lots of members will be able to come along to our first day meeting of 2022.

FROM THE EDITOR'S DESK

Hello Members

This is the first 'Show Time' newsletter we have had in two years so there is a lot of important information included. Please read it carefully and if you have any queries do not hesitate to speak to a member of the committee or any experienced grower who will be able to help you. With your help and participation, I'm sure our first show in our new venue will be a resounding success.

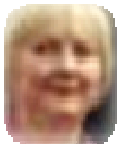
Lynne



NOVICE CORNER Committee member, **John Clancy**, is the co-ordinator and members who have a cultural problem or any questions about their orchids are invited to speak to John during Novice Corner. If it is not within John's area he will refer you to another grower who may be able to help. If there is a particular topic you would like to have covered in Novice Corner please feel free to contact John on 44439072 or email john.clancy50@me.com.

THE SHOALHAVEN ORCHID SOCIETY MEETS ON THE **THIRD SATURDAY** OF THE MONTH- at **10.00am** IN THE BOMADERRY COMMUNITY CENTRE, 19 BIRRILEY STREET, BOMADERRY.

The Shoalhaven Orchid Society disclaims any liability for losses which may be attributed to the use of any of the material mentioned in this newsletter.



PRESIDENT'S REPORT

I really don't enjoy Winter with all the efforts you go to try to keep warm. The cold strong winds are particularly annoying especially for orchid growers with pots blowing over and plants

drying out more quickly.

Our guest speaker Jan Robinson's talk at the last meeting was quite a surprise. Who would have thought a talk on 'Some Easy to Grow Orchids' would have a twist to it - that all orchids are not easy to grow when there are so many nasties like slugs, dendrobium beetles - even cockatoos ready to have a munch.

Sandra Ellis's benched specimen plant of *Paph. insigne* looked wonderful at the last meeting. Every year it gets bigger and better. Well done Sandra.

I received good feedback from our members who went on the recent bus trip to Orchids Out West. They enjoyed seeing the beautiful displays put on by the attending orchid societies and shopping up big at the vendor tables. A number did say they felt that orchid prices have increased. Thank you, Francoise, for organising the day out for our members who also enjoyed the company of members from Milton-Ulladulla O/S as well.

Our 18th June Meeting will be the start of our first 3 Saturday Day Meetings for the year, starting at 10am. Richard Dimon will be our Guest Speaker talking on Aust. Native Orchid Conservation which he has personally been involved with, while studying at University and working at both Melbourne and Sydney Botanic Gardens.

Our Winter Show being held on Sat. 9th July is fast approaching, so keep preening your orchids in readiness to help make our show spectacular. At our June Meeting a roster will be on hand for members to write their names down to volunteer to help at the show. All jobs are important from raffle ticket selling, sales table to security, so please volunteer for a couple of hours if you can. Also, small bundles of raffle tickets will be available for members to sell and return on show day. Advertising will be very important for this show being our first at this venue. Please take home some flyers and have them placed on community notice boards in your area, give to interested friends or even on a safe place on the window of your car.

See you at the next meeting,

Warm regards,

Louise

Current Life Members Shoalhaven Orchid Society

Mr Stuart Crowther - 1999

Mr Alan Stephenson - 1999

Mr Colin Marstin - 2007

Mr John Webb - 2009

Mrs Lynne Phelan - 2012

Mr Allan Taylor - 2014

Mr Brian Phelan - 2022



Books! Books! Books!

Our society has many great books for you to borrow!!

Speak to Robin Gunter who would be delighted to help you

Attendance Book

Members and guests must sign the attendance book. This is required for insurance purposes.

If you don't sign, you're not covered.

Please sign beside your number given by the society.

Workshop Novices Corner

Between 10.00am and 10.15am newer growers can speak to experienced grower. **February: *This will be a Q&A session so please bring any problem plants or questions for some advice.***

Any problem orchid for advice on? (Please bring it in plastic bag if you suspect it has a disease or pest problem.) Remember, there's no such thing as a 'dumb orchid question'!



The benching marshals were impressed with John Clancy's *Den. tetragonum*.



The Society thanks our generous Sponsors

We encourage you to support them.



IMPORTANT NOTE

Single use plastic bags are banned so please make sure you bring your own box/bag/basket for plant purchases at meetings and shows.




WE STOCK AN EXTENSIVE PRODUCT RANGE FOR ALL YOUR ORCHID NEEDS

- ✂ Campbell's Orchid Fertilizer ✂ Clear Phalaenopsis Pots
- ✂ White and Coloured Labels ✂ Range of Orchid Growing Media... AND MORE!

Take advantage of your VIP Customer Pricing
PHONE FOR DELIVERY OR VISIT US AT 21 BELLEVUE ST, SOUTH NOWRA

Ph: 4423 2359 Fax: 4423 7180

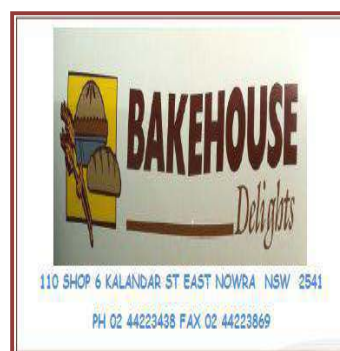


UNWANTED PRESENT FOR SALE

This GIANT (leaf span 1 metre, weighs 18 kg!) stanhopea was given to us in return for repotting a VERY overgrown phalaenopsis. It flowers prodigiously around Christmas. It has apparently been growing happily in its basket for 25 years. It could be grown on or, with major effort, divided. It will be auctioned at the June meeting but we won't bring the plant in; the successful bidder will have to collect it from our place in Falls Creek. All proceeds will be donated to the Mini Charity Auction to be held at our August meeting. **Brian and Lynne Phelan.**



**SHOALHAVEN
ZOO**



Benching Results - JUNE 2022

Category	Plant	Owner
JUNIOR		
NOVICE		
Oncidiinae Alliance	<i>Gomesa crispa</i>	D. Slye
Laeliinae Alliance	<i>Lc. Little Susie ‘Bingo’</i>	T. Gablonski
Miscellaneous orchid	<i>Zygo. Artur Elle</i>	D. Slye
Novice Orchid of the Night	<i>Lc. Little Susie ‘Bingo’</i>	T. Gablonski
INTERMEDIATE		
Aust. Native species/ hybrid	<i>Den. Hilda Poxon</i>	F. Sikora
Species orchid	<i>Paph. insigne</i>	S. Ellis
Oncidiinae Alliance	<i>Onc. Gower Ramsey</i>	J. Clarke
Laeliinae Alliance	<i>C. Hoodyai Delight x C. Lucky Man</i>	F. Sikora
Cymbidium	<i>Cym. tracyanum</i>	R. Hahn
Miscellaneous	<i>Bulb. Elizabeth Ann ‘Buckleberry’</i>	J. Harriman
Intermediate Orchid of the Night	<i>Paph. insigne</i>	S. Ellis
OPEN		
Paphiopedilum	<i>Paph. Jogjae</i>	W. Simmons
Oncidiinae Alliance	<i>Odm. Stirbic</i>	B. Phelan
Laeliinae Alliance	<i>C. Unknown</i>	S. & K. Wynn
Vandaceous	<i>V. Unknown</i>	G. Jonas
Species	<i>Paph. insigne var. sanderae</i>	W. Simmons
Aust. Native species	<i>D. tetragonum</i>	J. Clancy
Miscellaneous	<i>Zygo. Artur Elle</i>	G. Jonas
Open Orchid of the Night	<i>Paph. insigne var. sanderae</i>	W. Simmons
Orchid Species of the Night	<i>Paph. insigne var. sanderae*</i>	W. Simmons
Orchid Hybrid of the Night	<i>Masd. Mary Staal x M. urosalpynx*</i>	B. Phelan
Benching Marshals’ Choice	<i>Den. tetragonum</i>	J. Clancy
Growing Competition <i>Laelia anceps</i>	1st F. Sikora, 2nd J. Clarke, 1 point to J. Cameron, S. Ellis, R. Findlater, J. Harriman, B. Phelan, L. Phelan, D. Slye, N. Weatherby, K. Wynn, S. Wynn, Y. Young.	
* Chosen by guest speaker, Jan Robinson.		

Popular Vote Reminder

All plants benched must have a benching card with the name of the orchid on the front and the owner's name on the back. To avoid benching delays, **please fill in the cards before you come to the meeting.** The template or supplies of the benching card are available from Francoise.

Note – for the Growing Competition there is no need to write the name of the orchid; just put your name on the back. You will still need to have your name on a tag in the pot.

SHOW PRIZE RIBBONS - The Society purchased prize ribbons for our anticipated shows in 2021 but these were not used due to the cancellation of all events. Rather than waste these ribbons and to avoid additional expense, the Committee has decided that the 2021 ribbons will be awarded at our shows this year.

JUDGING RESULTS FOR MAY 2022

CONGRATULATIONS TO ALL



Novice Orchid of the Night



Intermediate Orchid of the Night
Paph. insigne S. Ellis



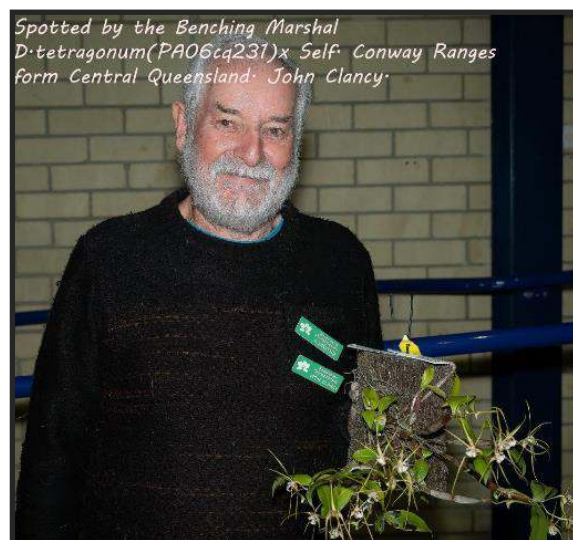
Orchid Species of the Night
& Open Orchid of the Night



Orchid Hybrid of the Night
Masd. Mary Staal x M. urosalpynx B. Phelan



Auctioneer Richard, "What am I bid for this fine Phalaenopsis?"



Spotted by the Benching Marshals
Den. tetragonum x Self J. Clancy

Specimen Orchids – Can you grow one?

Have you ever been to an orchid meeting or show and been totally blown away by a magnificent orchid covered in flowers? Chances are, this was a specimen plant; the result of **many years** of careful cultivation without dividing the orchid. It doesn't have to be a large orchid; even miniature orchids can become specimens due to the number of growths and flowers.

The 'Champion Specimen' award at an orchid show is governed by criteria set out in the OSNSW Orchid Judging Manual.

6) Guidelines for Judging Champion Specimen.

The following are the guidelines to be considered when assessing plants to determine the champion specimen:

- a) *Floriferousness:* The quantity of flowers shall be unusually large in number and in proportion to the size of the plant. Plants which are naturally small but carry many flowers e.g. *Promenaea*, shall be considered equally as other larger type plants.
- b) *Size:* The plant shall be of a significantly superior size to that expected of a normal mature example of its type.
- c) *Condition:* The plant shall have clean mature foliage, free from any significant damage or blemishes that detract from the overall effect.
- d) *Presentation:* The flowers shall be arranged to display equally over the plant to give an overall pleasing effect, without any areas which are significantly devoid of flowers. The inflorescences may be upright, arching, pendulous or any combination of these. The flowers shall be displayed well clear of the foliage or shall be readily visible amongst the foliage such as with some of the smaller growing miniature type flowers.
- e) *Where it is the habit of the plant to flower as single flower growths on a tall stem, e.g. *Paphiopedilum*, it is desirable that the flowers are all approximately, the same height.*
- f) *Flower Quality:* The flowers shall be of a reasonable shape, for the type, but not necessarily of award quality.
- g) *The colour shall be clear, glistening and appealing, not muddy or flat. The champion specimen is not necessarily the plant with the most flowers but the one which satisfies the above criteria.*

So, how do you become the owner of one of these covetable specimens?

The first thing to observe is that a specimen is a single, complete plant; not a collection of pieces of the same plant in a pot or on a mount. How do you choose an orchid with the potential to grow into a specimen? Some attributes to look for include:

- The orchid should have closely coupled pseudobulbs so they mass together.
- It should be a vigorous grower and make multiple leads.
- It should make multiple inflorescences.
- It should grow in all directions.
- Small leaves and brightly coloured, long-lasting flowers on upright stems are an advantage.

Once you have chosen the orchid you want to grow on, keep it in a pot just large enough for a year or two's growth. By repotting each year or two you can keep the plant tidy and ensure it retains a good shape. After you have moved the plant into a bigger pot three to five times, say after 6-8 years, you should have a reasonable specimen.



President Louise Gannon with the Best Specimen orchid, *Coelogyne flaccida*, at the 2019 Spring Show.



Sandra Ellis's *Paph. insigne* benched at the May meeting certainly meets all the criteria for a specimen plant. Well done, Sandra.

SHOALHAVEN ORCHID SOCIETY SHOW

Please read carefully

WINTER SHOW Saturday 9 July
BOMADERRY COMMUNITY CENTRE

The Show Schedule for our **Winter** show will be included with this newsletter. Please read the schedule carefully and familiarise yourself with the rules. Also, refresh your memory by reading your Checklist for Preparing and Benching Orchids.

Raffle The show raffle is a major fund raiser for our society. Booklets of tickets will be available at the **June** meeting so please try to sell some tickets (**\$1.00 each or 6 for \$5.00**) and return the money and stubs (sold or unsold) at the Show. There will be three prizes:

1st prize will be one flowering cymbidium orchid plus a \$50 Bunnings gift card;

2nd prize will be a Family Pass to Shoalhaven Zoo;

3rd prize will be a \$50 Bunnings gift card.

The raffle is a way that all members can help contribute to the cost of running our show even if they are limited in being able to help in other ways so please help our Society out by selling the tickets and returning them.

Register your plants with the Show Registrar no later than **8.00p.m. on Wednesday**

6th July prior to the show. Contact details for **Francoise** are on the schedule. Francoise requires the **class number and the number of plants entered in each class**. Class numbers are in your schedule. Also advise Francoise if you are benching any seedlings.

Entry Forms Your Entry Form is included with your newsletter. **Please have it filled in with your plant names and classes and give it to the Show Registrar when you have finished benching your plants.**

Benching on Friday 8th July will take place between **3.00pm and 5.30pm at Bomaderry**. Note that **5.30pm** is the **finishing** time. If possible, please bench your plants yourself. This means finding the right class for your plant on the tables. If you are not sure which is the correct class, please ask **Don Hogan** or another Open grower.

Labelling Please check your plant labels and name tags to make sure they are accurate, legible and concealed within the pot.

Benching Cards As at our monthly meetings, each plant benched will have a benching card with the class and plant name clearly written on the front and the owner's name on the back. A heavier card will be used for shows and these will be available at the June meeting. Please fill in the cards prior to coming to bench your plants.

Helpers are required for selling raffle tickets, to provide security for our orchids and to be available to talk to the public. Please consider volunteering a couple of hours of your time to support the society. A roster will be circulated at the **June** meeting to enlist helpers. **Please see/contact Val Starling or the Society email to put your name down.**

Sales Table Members are reminded that the Society's commission on plant sales is 10%. (15% for sales over \$500.) Orchids, ferns and/or foliage plants **only** can be sold. Plants for sale should be healthy and free from pests and/or disease and be well established in the pot. Members may offer exhibited plants for sale, but these cannot be collected until the end of the show. **For Sale** tags are available from the Sales Table team and members will need to give the Sales Table a list of plants and prices. NOTE: Members wishing to sell plants on the sales table must either:

- exhibit some plants in the show, OR
- be rostered on to work at the show.

Sale of native orchids Members wishing to sell NSW native orchids (species and hybrids) at our shows should refer to the Society's NSW Native Orchid Sales Guidelines. A copy is available from the **Secretary**. Each native orchid must be tagged. These pre-printed tags may be purchased from the **President** or **Treasurer**.



Advertising posters will be distributed at the **June** meeting for display in local shops/noticeboards. Perhaps place one on your car window if it doesn't block your vision. Please help advertise our Show. Email newsletter members will be sent one which they are free to download for display should they wish to do so. Cont. P8.

Show information continued

Trophies A reminder for winners of the Champion trophies at the **2019 Winter Show** to **please return them to the June meeting** cleaned/polished ready to go on the Champions table at the Show if they have not already been returned.

Show sponsors Our generous sponsors enrich our show by donating prizes. They deserve our support. Check your show schedule and keep the list of sponsors handy so that the next time you need supplies you can support the businesses that support us.

Opening/closing The Show will open at 9.00am on Saturday. The scheduled finishing time is **4.00pm**. *Please be on hand to pick up your plants promptly* when the Show closes or arrange for another member to collect your plants.

Donations of cakes, slices, sandwiches or biscuits for the volunteer workers would be appreciated.

Donations of plants suitable for giving to children who visit our show will also be most welcome.

2022 Shoalhaven Orchid Society

Committee Meetings 2022

6 June 1.00 pm

Society Meetings 2022

Saturday Day Meetings 10am – 1pm

18th June Richard Dimon from Sutherland OS on Native Orchid Conservation.

16th July Guest Speaker Gary Hodder on Deciduous Dendrobiums

20th August Mini Charity Auction

19th September Guest speaker Mitch Kernaghan on Australian Native Orchids

17th October-Gavin Curtis on Callista Dendrobiums

21st November Guest speaker David Brooks on Cymbidiums

19th December TBA

Society Shows 2022

SOS Inc. Winter Show Saturday 9th July

SOS Inc. Spring Show Saturday 3rd September

SOS Inc. October Show Saturday 22nd October

Society Coming Events

Roving Day –TBA

Native Orchid Walk - Sept. 24th

Potting Day – October 15th

Other Orchid Events

Mingara Orchid Fair and Show 25th-26th June [See Noticeboard for more information.](#)

St Ives Orchid Fair 19th - 21st August

Paphiopedilum and Cymbidium Show 12th – 14th August (now at Yagoona)

Australian Native Orchid Show Revesby 11th Sept.
Southern Orchid Spectacular 7-9 Oct. Sutherland

Growing Competition 2022

Please try to find and bring your growing competition plant each month. If you group them with a distinctive coloured label they are easy to find.

June. *Den.* Australian Colourfest 'Nutbag' x Stoney Point 'Yum Yum'

July. *Rlc.* Dal's Ambition 'Tara' x C. Aloha Case 'Ching Hua'

August *Laelia anceps* 'Wallbrunn' x *L. anceps* 'Rosminah'

September *Den.* Australian Colourfest 'Nutbag' x Stoney Point 'Yum Yum'

October. *Rlc.* Dal's Ambition 'Tara' x C. Aloha Case 'Ching Hua'

November. *Laelia anceps* 'Wallbrunn' x *L. anceps* 'Rosminah' **(Last Benching)**

December. *Den.* Australian Colourfest 'Nutbag' x Stoney Point 'Yum Yum'

COVID RESTRICTIONS

Please observe the following:

- 1. Sanitise your hands with the hand sanitiser provided when you arrive.**
- 2. Wearing a mask is optional.**
- 3. Social distancing is recommended.**
- 4. If you are unwell, please do not attend.**