



Cymbidium  
Shoalhaven

# SHOALHAVEN ORCHID SOCIETY

Website: [www.shoalhavenorchidsociety.org.au](http://www.shoalhavenorchidsociety.org.au)

Email: [shoalhavenorchidsociety@gmail.com](mailto:shoalhavenorchidsociety@gmail.com)

PO Box 1022 Nowra NSW 2541



Shoalhaven Orchid Society Inc.

## NEWSLETTER JULY 2025

**PRESIDENT** Louise Gannon [lougannon@bigpond.com](mailto:lougannon@bigpond.com) Ph 0419 241 177

**VICE PRESIDENT** Martin Montebello [orchid-hunter@hotmail.com](mailto:orchid-hunter@hotmail.com)

**SECRETARY** Francoise Sikora [fsfrancoise@gmail.com](mailto:fsfrancoise@gmail.com)

**TREASURER** Kerrie Carter [kerriecarter10@gmail.com](mailto:kerriecarter10@gmail.com)

**COMMITTEE** John Clancy, John Clarke, Sandra Ellis, Mary Ahonen ,  
Will Fisher, Stafford Lester, Sue Montebello, Val Starling

**EDITOR** Wayne Lee [wglee1964@gmail.com](mailto:wglee1964@gmail.com)

**LIFE MEMBERS** Colin Marstin 2007, John Webb 2009,  
Lynne Phelan 2012, Allan Taylor 2014, Brian Phelan 2022,  
Sandra Ellis 2025.

**Next Meeting: Saturday day meeting 19<sup>th</sup> 10am-1pm.**

**Bomaderry Community Centre. 19 Birriley Street, Bomaderry.**

Room opens at 9.00am for set up\*; benching to be **finished** by 10.00am; Popular Vote 10.00-10.15am; Novice Corner 10.15-10.30am. Meeting commences at 10.30am. \* Many hands make light work to set up and pack up.

**Guest Speaker:** Gary Jonas speaking on how he grows his orchids

**Novice Corner:** Richard will be discussing Viral Infections and the difficulty in telling the difference.



“ Louise presenting a cheque for \$1340.00 to Angela Pendlebury of North Shoalhaven Meals on Wheels, being the monies raised at our Charity Auction held at our may meeting,”

**SOS WINTER SHOW JULY 12<sup>TH</sup> SATURDAY 9AM – 3PM**

**Set up Friday 11<sup>th</sup> from 12 noon to 2pm orchid benching 2pm -4 pm**

THE SHOALHAVEN ORCHID SOCIETY MEETS ON THE **THIRD MONDAY** OF THE MONTH- at  
**7.00 PM** IN THE BOMADERY COMMUNITY CENTRE, 19 BIRRILEY STREET, BOMADERY.

The Shoalhaven Orchid Society disclaims any liability for losses which may be attributed to the use of any of the material mentioned in this newsletter.

## **PRESIDENT'S REPORT**

At the time of writing this report we are in the grip of some terrible weather which has been described funnily enough as a 'Bomb Cyclone'. There is nothing funny about it with heavy rain, flooding and terrible winds.

Thank you, Martin Montebello, for speaking to members at the last meeting on preparing your orchids for shows. A lot of good tips were given by Martin.

So close now to our Winter Show on the 12<sup>th</sup> July, with setting up on the 11<sup>th</sup> from 12pm to 2pm. Please assist if you can. Plants for benching arriving from 2pm to 4pm. It helps to write all your benching cards and entry form out at home beforehand. I look forward to seeing all your well gown orchids on display. A special request to Novice Members to please bench your flowering orchids (you have owned for at least 6 months). I have always enjoyed show days with not only seeing some beautiful orchids displayed but it gives me a chance to catch up with members and visitors.

I look forward to our July meeting when member Gary Jonas will be talking to us about how he grows his orchids. Over the past few years, we have seen Gary bench some lovely well grown orchids – paphiopedilums, cattleyas, cymbidiums and more, and he does this, without a shadehouse! Gary may have some good tips for us all.

See you all at our Winter Show.

## **From The Committee**

**Members Badges** The logo for the badges has been finalised and is with Shoalhaven Trophies and Engravers in Stewart Place Nowra. Committee have agreed for the Society to cover the cost of replacing members badges that have the incorrect logo. Please bring your badge to a meeting to have it replaced. Any new member may now order their Society Badge from the Engravers.

**Charity Auction** At our June meeting Louise presented North Shoalhaven Meals on Wheels Representative Angela Pendlebury with a cheque for \$1340 being the proceeds of May Auction.

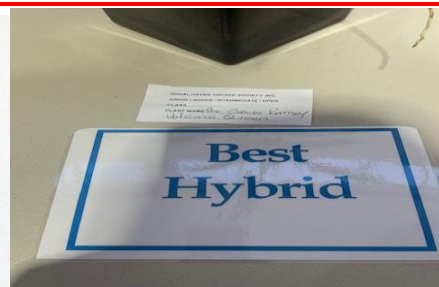
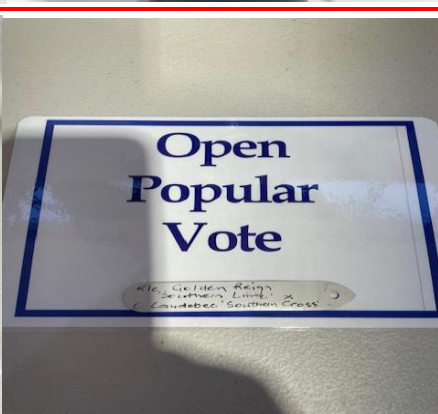
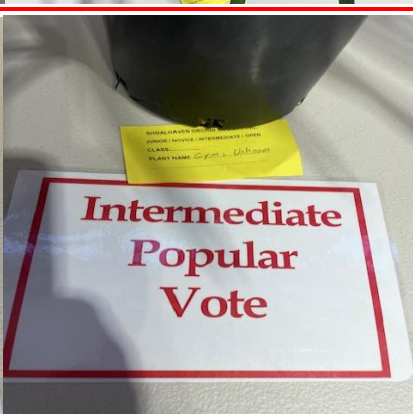
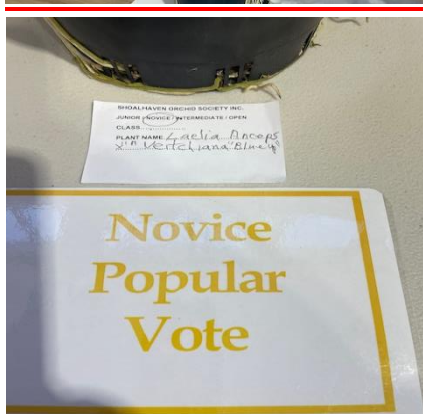
**Growing Competition** will continue with 2 plants, each being brought in at alternate meetings until one flowers and then the competition will continue with one plant, being brought in every 3 months.

**Bunnings BBQ** the Committee has accepted to do a BBQ on Sunday September 28<sup>th</sup>. We will be seeking volunteers to assist on the day.



BENCHING RESULTS		Month	JUNE	Year 2025
Class	Orchid Name		Name of Grower	
NOVICE				
Laeliinae Alliance	L. anceps Veitchiana ‘Blue’		M. de Launey	
Australian native hybrid/species	Den. caudiculatum x D. fuliginosum		F. Flack	
Miscellaneous orchid	Den. Hybrid Unknown			
Novice Orchid of the Night	L. anceps Veitchiana ‘Blue’		M. de Launey	
INTERMEDIATE				
Species orchid	Coelogyne tormentosa		W. Lee	
Oncidiinae Alliance	Onc. Sharry Baby		W. Lee	
Cymbidium	Cym. Unknown		R. Bristow	
Intermediate Orchid of the Night	Cym. Unknown		R. Bristow	
OPEN				
Paphiopedilum – species/hybrid	Paph. insigne		W. Simmons	
Oncidiinae Alliance	Onc. Gower Ramsey ‘Volcano Queen’		M & S Montebello	
Laeliinae Alliance	C. Golden Reign x C. Caudebec ‘Southern cross’		L. Gannon	
Species	Neolauchea pumila		M. Ahonen	
Australian native hybrid	Den. Ulmarra ‘Micky B’ x D. Starsheen ‘Botanic Fireworks’		J. Clancy	
Australian native species	Den. tetragonum		J. Clancy	
Cymbidium	Cym.Firefox Mini Pharaoh		J. Clarke	
Miscellaneous orchid	Zygo. Honalulu bay		A. Van Bockel	
Open Orchid of the Night	C. Golden Reign x C. Caudebec ‘Southern cross’		L. Gannon	
Species of the Night	Paph. insigne		W. Simmons	
Hybrid of the Night	Onc. Gower Ramsey ‘Volcano Queen’		M & S Montebello	
Assistant/ Benching Marshal’s Choice	Cym. Unknown		R. Bristow	
Growing Competition	Richard Korber 5 points; John Clarke 3 points; 1 point each to Ray Bristow, Martin de Laune, Will Fisher Wayne Lee			
Number of plants benched	35	Number of Growing comp. plants	6	





# ORCHID GROWING STRUCTURES

Lynne Phelan

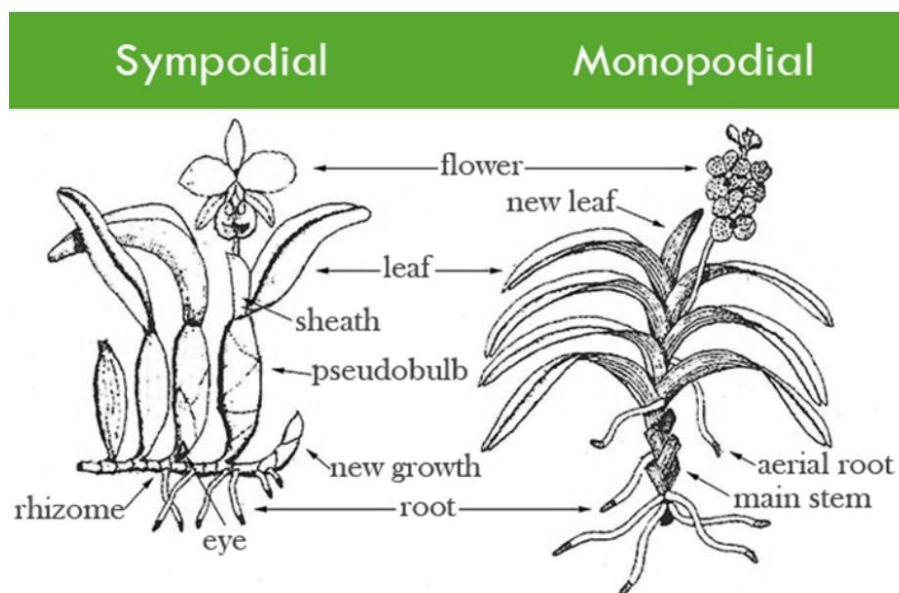
There are two basic types of growing structures of orchids, **monopodial** and **sympodial**. 'Mono' is Greek for 'one,' and 'podia' translates from Greek as 'foot' or 'leg.' Since plants don't have feet, podia is used to describe their roots. 'Sym' can be translated from Greek into English as 'together' or 'sharing.'

Monopodial orchids have a single stem from which leaves and flowers grow and a single root system from that same stem. They grow vertically. Monopodial orchids don't have pseudobulbs. Any water reserves they have are held in their roots and leaves. Because they don't have much capacity to store water, monopodial orchids tend to need more regular watering than sympodial orchids. Sometimes little plantlets, or **keikis**, develop on the main stem of monopodials but they share the root system of the main stem.

Many phalaenopsis, sarcochilus and vanda orchids are monopodial.

A sympodial orchid has a stem that grows close to the ground. From this low-growing stem, which is called a **rhizome**, sprout pseudobulbs, one growing at the base of the previous one. They grow horizontally or laterally. Each pseudobulb grows its own flower spike and root system, hence the name sympodial. As the pseudobulbs have their own root system, it is possible to split a sympodial orchid with multiple pseudobulbs into separate plants.

Cattleya, cymbidium, dendrobium and oncidium are some sympodial orchids.



## References:

1. Better-Gro Orchid Blog
  2. American Orchid Society *All About Orchids* website
-





**The Society thanks its generous sponsors.  
We encourage members to support them.**



**SHOALHAVEN  
ZOO**



110 SHOP 6 KALANDAR ST EAST NOWRA NSW 2541

PH 02 44223438 FAX 02 44223869



**WE STOCK AN EXTENSIVE PRODUCT RANGE FOR  
ALL  
YOUR ORCHID NEEDS**

\_\_\_ Campbell's Orchid Fertilizer \_\_\_ Clear Phalaenopsis  
Pots

\_\_\_ White and Coloured Labels \_\_\_ Range of Orchid  
Growing Media...  
**AND MORE!**

Take advantage of your VIP Customer Pricing  
**PHONE FOR DELIVERY OR VISIT US AT 21  
BELLEVUE ST, SOUTH NOWRA**

**Ph: 4423 2359 Fax: 4423 7180**



## **NOTICES**

**Bishops Discount Card.** A new discount card will be issued when you renew your membership. Please bring your old card to the meeting to exchange for the new card. Secretary Francoise has the new cards.

**Library.** Books! Our society has many great books for Speak to Robin who would be delighted to help you.

**Attendance Book.** Members and guests must sign the attendance book. This is required for insurance purposes. Our insurance cover applies to your attendance at any society organised event. ***If you don't sign, you're not covered.*** Please sign beside your number given by the society.

**COVID RESTRICTIONS** Please observe the following:

- 1. Sanitise your hands with the hand sanitiser provided when you arrive.**
- 2. Wearing a mask is optional.**
- 3. If you are unwell, please do not attend.**



2025 Shoalhaven Orchid Society

# *What's On at a Glance*

## **Committee Meetings 2025**

Tuesday 5<sup>th</sup> August 10.00am

## **Society Meetings 2025**

**Saturday Day Meetings 10am – 1pm**

**19<sup>th</sup> July – Gary Jonas speaking on how he grows his orchids.**

**16<sup>th</sup> August -Ken Coates "Growing Orchids in Cooler Climates"**

**15<sup>th</sup> Sept – Richard Dimon, his trip to Borneo & Peninsular Malaysia.**

**20<sup>th</sup> October- Neutrog Representative**

**17<sup>th</sup> November- TBA**

**15<sup>th</sup> December – Christmas Party**

## **Society Shows 2025**

**SOS Inc. Winter Show Saturday 12<sup>th</sup> July**

**SOS Inc. Spring Show Saturday 30<sup>th</sup> August**

**SOS Inc. October Show Saturday 18<sup>th</sup> October**

## **Society Coming Events**

**Native Orchid Walk- TBA**

**Potting Day- TBA**

## **Other Society Shows**

### **MUOS**

Spring Show 13<sup>th</sup> - 14<sup>th</sup> September

### **BBOFS**

Winter Show 19<sup>th</sup> – 20<sup>th</sup> July

Spring Show 6<sup>th</sup> – 7<sup>th</sup> September

Native Show 18<sup>th</sup> – 19<sup>th</sup> October

### **IDOS**

Spring Show 6<sup>th</sup> – 7<sup>th</sup> September

October Show 11<sup>th</sup> October

-

.

## **Growing Competition 2025**

Please try to find and bring your growing competition plant each month. If you keep them grouped together with a distinctive coloured label it makes them easy to find.

**February.** Zga. Pine Road x Zygo. Kosciuszko x Zga. Clare Fisher 'Amanda'

**March.** Den. Phena's Charm 'Genesis' x Spec. Moonmere

**April.** Sarc. Bunyip 'Dark Horizon' x Kulnura Bliss 'Orange Ring'

**May.** Zga. Pine Road x Zygo. Kosciuszko x Zga. Clare Fisher 'Amanda'

**June.** Den. Phena's Charm 'Genesis' x Spec. Moonmere

**July.** Sarc. Bunyip 'Dark Horizon' x Kulnura Bliss 'Orange Ring'

**August.** Den. Phena's Charm 'Genesis' x Spec. Moonmere

**September** Sarc. Bunyip 'Dark Horizon' x Kulnura Bliss 'Orange Ring'

**October.** . Den. Phena's Charm 'Genesis' x Spec. Moonmere

**November.** Sarc. Bunyip 'Dark Horizon' x Kulnura Bliss 'Orange Ring'

**December.** Den. Phena's Charm 'Genesis' x Spec. Moonmere

## **ORCHID EVENTS 2025**

**National Orchid Extravaganza, The Arena Sports Club, Yagoona 8<sup>th</sup> – 10<sup>th</sup> August**

**St Ives Orchid Fair- St Ives Showground, St Ives. 15<sup>th</sup>–17<sup>th</sup> August.**

**Australian Native Orchid Show, Revesby Workers Club – September 6<sup>th</sup>.**

**South & West Regional Show & Conference**  
Fitzroy Pavillion, Exhibition Park, Canberra  
September 20<sup>th</sup>-21<sup>st</sup>

**Orchids Central, Club Condell Park, Condell Pk. 17<sup>th</sup>-19<sup>th</sup> October**

**OSNSW Summer Show, Ermington Main Hall, Ermington 13<sup>th</sup>-14<sup>th</sup> December**