

Shoalhaven Orchid Society Inc.



Cymbidium Shoalhaven 'Touch of Class'

PATRON

The Hon. Shelley Hancock

PRESIDENT

Louise Gannon

lougannon@bigpond.com

Ph 0419 241 177

VICE PRESIDENT

Sandra Ellis

pollyellis@outlook.com

SECRETARY

Francoise Sikora

fsfrancoise@gmail.com

TREASURER

Tom Gablonski

tom@gablonski.org

COMMITTEE

John Clancy, Ron Findlater,
Don Hogan, John
Harriman, Val Starling

EDITOR

Teresa Bourke

teebourke@outlook.com

AFFILIATED WITH

the Australian Orchid Council and the Orchid Society of N.S.W.

www.shoalhavenorchidsociety.org.au

Email: shoalhavenorchidsociety@gmail.com

PO Box 1022 Nowra NSW 2541



Shoalhaven Orchid Society Inc

June 2021

Shoalhaven Orchid Society WINTER SHOW



Planning for the Winter Show is well underway. New corflutes and show ribbons have now been purchased and banners have been updated to reflect our new venue. If you're able to assist in any way, please speak to Val.
Hope you're all getting your plants ready.

SOCIETY INFORMATION

VENUE: BOMADERRY COMMUNITY CENTRE
17 BIRRILEY STREET, BOMADERRY.

NEXT MEETING

Saturday 19 June 2021 at 10:00am

Meeting room is open at 9:15am for setting up *

Benching to be **finished** by 10:00am

Novice Corner 10:00am - 10:15am

Popular Vote 10:15am-10:30am

Meeting commences 10:30am

* Many hands make for a quick set up/pack up.

Guest Speaker - Our Guest Speaker for June has changed. **Lynne Phelan** will step in for our Guest Speaker this month. Lynne will be talking about **Mexican Laelias**. Don't miss it!

GROWING COMPETITION - JUNE

Den. Australian Obsession 'Purple Paddle Pop' x
Den. Starsheen 'Botanic Fireworks'



ATTENDANCE BOOK

Members and guests must sign the attendance book. This is required for insurance purposes.

If you don't sign, you're not covered.

Please sign beside your number given by the society.



FROM THE EDITOR'S DESK

The Bunnings BBQ held on Saturday 5th June was another great success. More information to follow. Thank you to the organisers Yvonne and Captain Sandra and all the volunteers on the day.



Remember, you don't have to be on the committee to volunteer for any jobs.

More hands, make light work!

COVID REGISTER

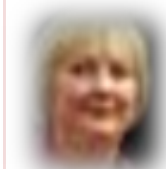


As well as signing the Attendance book, please also remember to sign the **COVID Register** and use the hand sanitiser provided when you arrive at the meeting.

PLEASE NOTE - DURING THE 3 MONTHS OF WINTER THE SHOALHAVEN ORCHID SOCIETY WILL MEET ON THE **THIRD SATURDAY** OF THE MONTH at **10:00AM** IN THE BOMADERRY COMMUNITY CENTRE, 17-19 BIRRILEY STREET, BOMADERRY.

The Shoalhaven Orchid Society disclaims any liability for losses which may be attributed to the use of any of the material mentioned in this newsletter.

PRESIDENT'S REPORT



Our first Winter Day Meeting is on Saturday 19th June and has come just in time to save us from coming out in the cold of night. There has been a change in speakers for the meeting with Lynne Phelan now talking on Mexican Laelias, which coincides with them being in flower at the moment. Guest Speaker, David Brooks will be attending our Saturday 17th July meeting, talking on Cymbidiums.

Everyone enjoyed Jane Wright's talk on 'What Judges Look For' at the last meeting. I hope her talk will help when you buy flowering orchids and also, when you are voting on the benched orchids at our meetings.

We have just had another successful Bunnings BBQ in early June. Thank you to everyone who helped and organised the day.

Our Winter Show is being held in our meeting hall on **Saturday the 10th July** with setting-up on the Friday. Please read your Show Schedule carefully. Keep preening your orchids so that we may have a beautiful and successful show. Volunteers will be needed for the Show. Please speak to Val who will have the roster at the June meeting. Also, advertising flyers will be available to take home. Fifteen new corflute signs have been made and the banners changed to reflect our new venue.

The Shoalhaven Zoo have been generous sponsors of our shows with the Zoo kindly donating a Family Pass for the second prize in our Show raffles. Our recently passed member and friend Phil Harrington secured this for our Society and the zoo is continuing with their sponsorship. I plan to have my first visit to the zoo before the end of June – using my Government voucher. Member Brian Shelvey recently visited the zoo and had an enjoyable day looking at the animals and also admiring the orchids attached to the cliff face.

Our Committee has discussed having a 'Roaming Day' in a few months time where 3 members will open their shade/glass houses to show members how they grow their orchids – a day not to be missed.

Warm regards,

Louise



Sandra Ellis finally retires after 48 years in the same workplace. Epic!

Current Life Members Shoalhaven Orchid Society

Mr Stuart Crowther - 1999
Mr Alan Stephenson - 1999
Mr Colin Marstin - 2007
Mr John Webb - 2009
Mrs Lynne Phelan - 2012
Mr Allan Taylor - 2014



Books! Books! Books!

Our society has many great books for you to borrow - Come & see!!
Speak to **Robin Gunter** who would be delighted to help you

Supper While we are still operating under Covid 19 restrictions members should continue to bring their own cup/mug which you leave on the kitchen counter near the sign for the beverage of your choice – tea or coffee. The eats are provided by members on a voluntary basis and it seems to work if each member contributes a share plate to a few meetings each year.



WISH LIST

Looking for a special plant??

Email Teresa (email address front page) with
Your Name, Phone number & plant name
and I will add it to our newsletter.

Shoalhaven Heads Native Botanic Gardens

Recently I visited the Shoalhaven Heads Native Botanic Gardens and to my surprise there under a big old gum tree was an extremely large *Cymbidium tracyanum* in flower, creating a beautiful display. There would have been at least 40 spikes, all arching forward displaying its beautiful fragrant blooms around the base of the tree. Nature had created this wonderful display of all near perfect flowers.

Cymbidium tracyanum is not an Australian native cymbidium but a species orchid native to Asia. I feel the garden's caretakers probably know this fact and have chosen to overlook it because of its beauty. I dare say that it has been in this position for many years from when the gardens grew from being called Curtis Park Arboretum to its present name.

The Shoalhaven Heads Native Botanic Gardens is a lovely place to visit. It is not large - only 1 hectare (2.5 acres) but very well kept by local volunteers. Well over a year ago I donated at least 15 tree ferns that came up in my orchid shade house. They transplanted well and now take pride of place in the fern garden.

Across the other side of the quiet road (Celia Place) the volunteers have continued planting trees and shrubs to complement the BBQ area, seating and children's play area. I live in the Heads and find the Gardens a relaxing, peaceful place to visit.

Louise Gannon



Don't forget - Saturday Meetings in June, July, August

The June General Meeting is **Saturday 19th June - 10am start**. Orchids to be benched by 10am.

'Fifty Golden Years' - Alan Stephenson



Committee is pricing the cost of a reprint of Alan Stephenson's Book "Fifty Golden Years" which will also be updated with the next 10 years. If anyone is interested in purchasing a copy please email the Society.

Do you have any spare trestle tables?

Committee is asking if anyone may have some tables for the Winter Show that we may borrow if they are required. They would need to be dropped off on the Friday at 1pm and picked up on the Saturday at around 4.30pm.

Please email the Society if you are able to assist.



Don't forget we have a Facebook page! This is a great way to showcase your orchids between meetings.

Let's face it, our beautiful orchids don't always make an appearance at the right time for meetings. Post your orchids on Facebook so we can all admire them.

Benching Results - May 2021

Category	Plant	Owner
JUNIOR		
NOVICE		
Cymbidium	<i>Cym. Pharaoh’s Dream</i>	T. Bourke
Oncidiinae Alliance	<i>Beallara</i> Diana Dunn	B. Shelvey
Aust. Native	<i>Den. Jonathan’s Glory</i>	R. Hahn
Miscellaneous orchid	<i>Prosthechea cochleata</i>	R. Hahn
Novice Orchid of the Night	<i>Prosthechea cochleata</i>	R. Hahn
INTERMEDIATE		
Paphiopedilum	<i>Paph. insigne</i>	N. Weatherby
Dendrobium	<i>Den. Hilda Poxon ‘Oakville’</i>	F. Sikora
Species orchid	<i>Phrag. longifolium</i>	J. Harriman
Oncidiinae Alliance	<i>Oda. Pacific Paranoia</i>	?
Laeliinae Alliance	<i>Rlc. Golden Zelle</i>	J. Harriman
Cymbidium	<i>Cym. Pharaoh’s Dream</i>	J. Clarke
Miscellaneous	<i>Bulbo. Oriental</i>	J. Harriman
Intermediate Orchid of the Night	<i>Rlc. Golden Zelle</i>	J. Harriman
OPEN		
Paphiopedilum	<i>Paph. lawrencianum x P. villosum</i>	W. Simmons
Oncidiinae Alliance	<i>Odcdm. Hansueli Isler</i>	B. Phelan
Laeliinae Alliance	<i>Catt. Unknown</i>	K. & S. Wynn
Species	<i>Paph. insigne var. Sanderæ</i>	W. Simmons
Aust. Native species	<i>Diplodium revolulum</i>	A. Stephenson
Aust. Native Hybrid	<i>Den. Star of Gold x D. fleckeri x D. bigibbum</i>	R. Korber
Cymbidium	<i>Cym. tracyanum</i>	G. Jonas
Miscellaneous orchid	<i>Paphinia</i> Majestic	B. Phelan
Open Orchid of the Night	<i>Cym. tracyanum</i>	G. Jonas
Orchid Species of the Night*	<i>Paph. insigne var. Sanderæ</i>	W. Simmons
Orchid Hybrid of the Night*	<i>Cycnodes</i> Super Swan	H. Douglass
Seedling	<i>Catt. Precious Jewel ‘Tiki’ x S. coccinea</i>	D. Hogan
<i>Growing Competition</i> <i>Sarc. Elegance ‘Super’ x S. Sweetheart ‘Speckles’</i>	1st. T. Bourke 2nd. Y. Young 1 point to : L. Cowell, L. Gannon, R. Korber, B. Phelan, L. Phelan, F. Sikora, D. Slye	
Apologies to R. Korber as his winning paph. at the April meeting was attributed to another member. The scores have been amended. * Chosen by guest speaker, Jane Wright.		

JUDGING RESULTS FOR MAY 2021

Congratulations to all



Novice Orchid of the Night -
Prosthechea cochleate R. Hahn



Intermediate Orchid of the Night -
Rlc. Golden Zelle J. Harriman



Open Orchid of the Night -
Cymbidium tracyanum G. Jonas



Orchid Hybrid of the Night -
Cycnodes Super Swan H. Douglass



Orchid Species of the Night -
Paph. insigne var. Sanderæ W. Simmons



Seedling - *Cymbidium tracyanum* - grown by
John Clancy



Growing Comp. Plants

May Novice Corner

Gary Jonas' talk on growing and caring for Phalaenopsis orchids was a hit. Thank you Gary.



NOVICE CORNER - WINTER MEETINGS

Between 10:00am-10:15am newer growers can speak to experienced grower. Any problem orchid for advice on? (Please bring it in plastic bag if you suspect it has a disease or pest problem.) Remember, there's no such thing as a '*dumb orchid question*'!

John Clancy is our Novice Corner Coordinator. Members who have a cultural problem or any questions about their orchids are invited to speak to **John** during Novice Corner. If it is not within John's area of expertise he will refer you to another grower who may be able to help. If there is a particular topic you would like to have covered in Novice Corner please feel free to contact John on 4443 9072 or email

June Novice Corner

Louise Gannon will share some great tips on growing orchids.

CASH OR CARD?



In recognising that many people these days prefer to use card transactions over cash, the society has invested in a device that will enable us to take payments using a debit card. The Eftpos machine will be trialled at the next meeting as well as the Winter Show.

BENCHING YOUR ORCHIDS AT WINTER MEETINGS - JUNE, JULY, AUGUST.

The Benching Marshal thanks members for ensuring that benching was completed in a timely manner at recent meetings. Please make sure all plants are benched in their correct sections **before 10:00am**. If you are not sure where to put a plant please ask Don or another Open grower. If you are bringing in lots of plants please arrive early so you have time to complete benching before 10:0am.

ARE YOU READY FOR WINTER?

Brian Milligan

Have you checked your fleecy-lined slippers and your supplies of medicinal spirits? What about your orchids?

Most epiphytic orchids like cold, wet conditions even less than we do. There are various steps you should undertake now to avoid being reported to the Royal Society for Prevention of Cruelty to Orchids!

Few epiphytic orchid species live further from the equator than we do here in Melbourne. It follows that during the winter they experience much shorter daylight hours in Melbourne, and that therefore we should do our best to give them as much light as possible. Conversely, they experience longer daylight hours here in summer, so living in Melbourne is not all bad!

Most of our cymbidium hybrids have been bred from Asian species that grow relatively close to the equator (there are three Australian species but they do not feature strongly in the breeding lines of most hybrids). Fortunately for us, most of the tropical cymbidium species used in hybridising come from mountainous habitats, rather than coastal ones, and they are therefore able to withstand relatively low temperatures at night. But winters in the tropics are relatively dry, in contrast to their hot, wet summers. We should try to duplicate these conditions when growing our cymbidiums – plenty of water in hot weather but much less in winter, especially during cold spells.

So, how do we increase the amount of light that our cymbidiums receive in winter, and protect them from cold, wet weather? For those who grow their plants out of doors under shade trees, the simplest solution is to move them under the eaves on the north side of your house. The proviso here is that the area is not excessively shaded by trees or by your neighbour's house. A slightly less satisfactory alternative is under the eaves on the east wall but facing south or west is definitely out, because your plants will be exposed to our coldest, windiest weather there. Don't forget that under the eaves, they will need watering regularly.

Serious cymbidium growers keep their orchids in a shade house fitted with a clear, corrugated fibreglass or polycarbonate roof. Shade cloth is best mounted about 300 mm above the roof to provide maximum cooling in summer. Preferably you should be able to remove the shading in winter. The solid roof provides two advantages – it avoids your plants remaining wet during prolonged cold, wet weather, and it prevents

water damage to the flowers in winter and spring. On the downside, you have to water all year round but at least you'll be able to provide water to your plants only when they need it. If you already have a solid roof, autumn is the best time to clean it. You'll be surprised how much more light it will transmit after you've washed it down while scrubbing with a household broom.

If you already have a shade house and its design doesn't allow for a fibreglass or polycarbonate roof, then consider covering it with temporary clear plastic sheeting during winter. Solar-Weave® is a reinforced durable material (1.8 m wide), sold by major nurseries, that serves well for about ten years before it needs replacing. I fit eyelets at 300 mm intervals around the edges and then tie it down over the shade cloth with fine wire. You will need a belt punch, eyelets and eyelet pliers (used for making ladies' dress belts – try Spotlight or maybe Bunnings). I sandwich two extra layers of Solar-Weave under the eyelets to reinforce them. It's important to support the centre of the plastic cover in some way so that in the event of rain, the water drains away. If not, you will create a monster birdbath, which will give you an unexpected shower if it gives way under the weight of water!

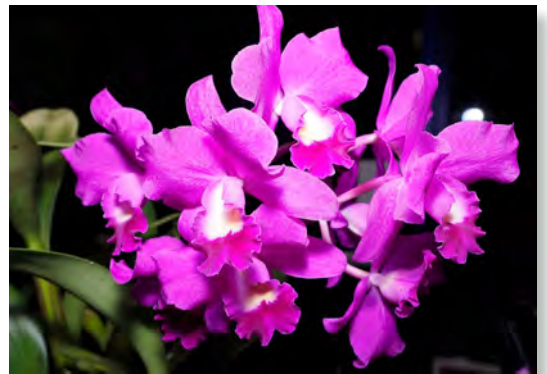
*Reprinted with permission from the
Orchid Societies of Victoria website*



Guest Speaker - Jane Wright talks about what Judges look for when judging.



For those who wanted to know - this little beauty belongs to
Sharyon Wynn - *Cattleya Blc Village "Chief North" x "Green Genius"*



Photographer's Choice

Upcoming Events

**Illawarra District Orchid Society
Winter Show**
3-4 July

**Mingara Orchid Club Inc.
Fair & Show**
26th - 27th June

BBOFS
Winter Show - 17th - 18th July
Spring Show - 4th - 5th September
Native Show - 16th - 17th October

Natonal Orchid Extravaganza
6-8 August

Southern Orchid Spectacular
24th - 26th September 2021

MUOS
Winter Show - 3rd - 4th July
Spring Show - 11th - 12th September
Native Show - 16th October

St Ives Orchid Fair
13th, 14th, 15th August

Cancelled

THANK YOU TO OUR GENEROUS SPONSORS

We encourage you to support them.



BISHOPS
EVERYTHING FOR PLANTS & ANIMALS

WE STOCK AN EXTENSIVE PRODUCT RANGE FOR
ALL
YOUR ORCHID NEEDS

- ✂ Campbell's Orchid Fertilizer ✂ Clear Phalaenopsis Pots
- ✂ White and Coloured Labels ✂ Range of Orchid Growing Media...

AND MORE!

Take advantage of your VIP Customer Pricing
PHONE FOR DELIVERY OR VISIT US AT 21 BELLEVUE ST,
SOUTH NOWRA
Ph: 4423 2359 Fax: 4423 7180



What's on at a Glance

COMMITTEE MEETINGS 2021

2nd March 2021	3rd August 2021
6th April 2021	7th September 2021
4th May 2021	5th October 2021
1st June 2021	2nd November 2021
6th July 2021	7th December 2021

GENERAL MEETINGS 2021

19th June }
17th July } **Saturday Day Meetings**
21st August } **10am – 1pm**
20th September
18th October
15th November
20th December

SOCIETY SHOWS 2021

SOS Inc. **Winter Show** Saturday 10th July
 SOS Inc. **Spring Show** Saturday 4th September
 SOS Inc. **October Show** Saturday 23rd October

COMING EVENTS

Possible home visit - TBA
 August - **Charity Orchid Auction**

2021 GUEST SPEAKERS

June - Lynne Phelan - Mexican Laelias
July - David Brooks - Cymbidiums
September - Mitch Kernaghan - Australian Natives
October - Gavin Curtis - Callista dendrobiums
November - Gary Hart - Paphiopedilums

2021 GROWING COMPETITION

Please try to find and bring your growing competition plant each month. If you keep them grouped together with a distinctive coloured label it makes them easy to find. Let's give Lawrie a bit of competition this year!

June - Den. Australian Obsession 'Purple Paddle Pop' x Den. Starsheen 'Botanic Fireworks'

July - Laelia anceps 'Wallbrunn' x L. anceps 'Rosminah'

August - Sarc. Elegance 'Super' x Sarc. Sweetheart 'Speckles'

September - Den. Australian Obsession 'Purple Paddle Pop' x Den. Starsheen 'Botanic Fireworks'
Last Benching

October - Laelia anceps 'Wallbrunn' x L. anceps 'Rosminah'

November - Sarc. Elegance 'Super' x Sarc. Sweetheart 'Speckles'

December - TBA

***Note:** 'Rosminah' is the spelling used by the hybridiser, Cal Orchids.



**PARKING AT BOMADERRY
COMMUNITY CENTRE**



A reminder to members that the two parking spaces nearest to the rear door of the Community Centre are reserved for our less mobile members.

Illawarra orchid society has kindly invited SOS members to join them on a bus trip to Mingara Orchid Show on **Saturday the 26th June**. Details are as follows:

Leaves from Wollongong railway, Piccadilly car park side at 7.30am returning at approx 5pm.



Cost \$25.00 per person. If time allows they will stop in at Royale Orchids on the way home. There are only 10 seats available for SOS and RSVP is strictly by 14th June to Illawarra - **Please let Françoise know asap.**