

Shoalhaven Orchid Society Inc.



Cymbidium Shoalhaven 'Touch of Class'

PATRON

The Hon. Shelley Hancock

PRESIDENT

Louise Gannon

lougannon@bigpond.com

Ph 0419 241 177

VICE PRESIDENT

Sandra Ellis

pollyellis@outlook.com

SECRETARY

Francoise Sikora

fsfrancoise@gmail.com

TREASURER

Tom Gablonski

tom@gablonski.org

COMMITTEE

John Clancy, Ron Findlater,
Don Hogan, John
Harriman, Val Starling

EDITOR

Teresa Bourke

teebourke@outlook.com

AFFILIATED WITH

the Australian Orchid Council and the Orchid Society of N.S.W.

www.shoalhavenorchidsociety.org.au

Email: shoalhavenorchidsociety@gmail.com

PO Box 1022 Nowra NSW 2541



Shoalhaven Orchid Society Inc

May 2021

Shoalhaven Orchid Society WINTER SHOW



Committee is in full swing planning for the Winter Show. New corflutes are being ordered and banners are being updated. Show ribbons are ordered. Show set up is underway. Start thinking about getting your plants ready.

SOCIETY INFORMATION

VENUE: BOMADERRY COMMUNITY CENTRE
17 BIRRILEY STREET, BOMADERRY.

NEXT MEETING

Monday 17 May 2021 at 7.00pm
Meeting room is open at 6.30pm *
Benching to be **finished** by 7.00pm.
Novice Corner 7.00 – 7.15pm
Popular Vote 7.15 – 7.30pm
Meeting opens 7.30pm.

* Many hands make for a quick set up/pack up.

Guest Speaker - Our Guest Speaker for May will be **Jane Wright**. Jane will be talking about **'What Judges Look for when Judging'**. Jane will also be bring with her a variety of quality orchids for sale. Don't miss out!

GROWING COMPETITION - MAY

Sarc. Elegance 'Super' x Sarc. Sweetheart
'Speckles'



ATTENDANCE BOOK

Members and guests must sign the attendance book. This is required for insurance purposes.

If you don't sign, you're not covered.

Please sign beside your number given by the society.



FROM THE EDITOR'S DESK

Last Bunnings BBQ held was a great success raising approx \$2000. Thank you to the organisers Yvonne and Captain Sandra and all the volunteers on the day.

We have another opportunity to run another Bunning BBQ on the 5th June. If you are able to assist, please speak to Sandra .



COVID REGISTER

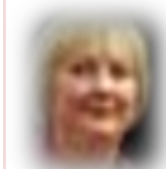


As well as signing the Attendance book, please also remember to sign the **COVID Register** and use the hand sanitiser provided when you arrive at the meeting.

THE SHOALHAVEN ORCHID SOCIETY MEETS ON THE **THIRD MONDAY** OF THE MONTH- at **7.00 PM** IN THE BOMADERRY COMMUNITY CENTRE, 17-19 BIRRILEY STREET, BOMADERRY.

The Shoalhaven Orchid Society disclaims any liability for losses which may be attributed to the use of any of the material mentioned in this newsletter.

PRESIDENT'S REPORT



I hope you all enjoyed celebrating our 65th Anniversary at the last meeting. Thank you, Lynne Phelan for taking us down memory lane with a visual presentation of the last 5 years since our 60th Celebration. I delighted in telling members and guests some choice excerpts from the book that Alan Stephenson wrote back in 2006 - Fifty Golden Years 1956 – 2006. It really is a wonderful book to have so that our history is not lost forever. It was unfortunate that 3 Life Members were not able to be present due to illness but our thoughts were with them. It was appropriate to see our 3 attending Life Members, Lynne, Alan and Colin cut the celebration cake. I am still thinking about the lovely cymbidium flowers Mary Ahonen made for our cake. I hope you all noticed that they were of our society orchid emblem – Cym. Shoalhaven 'a Touch of Class', and so exact! It was lovely to meet Mary and thank her in person. Thank you, Robyn Gunter for driving Mary to our meeting.

Also present was Barbara Simmons and her husband Graham. Barbara is our wonderful website designer who has done and still does such a magnificent job in maintaining our website. I doubt whether our Society has ever bestowed an 'Honorary Membership' but I think all members would agree, that it was appropriate for Barbara to receive it. Barbara was also presented with a glass vase with a lovely cattleya etched onto it. Thank you Ron Findlater for the well grown Den. speciosum orchid that was given to Barbara for her garden on behalf of members.

Jan Robinson's talks are always fun and informative and last month's talk on experiments she did while stuck at home during COVID last year was true to form, a big hit with members. I am sure it got us all thinking about trying experiments of our own.

On Saturday 24th April our Society combined with Illawarra O/S to help sell the orchid collection of our late friend and member, Phil Harrington. The day was a great success and Phil's wife Kim was very pleased with the result with well over half of the orchids sold. It is now a manageable number for Kim. The remaining plants will be sold through the sales table at shows. I would like to thank our Committee and members who helped on the 2 days leading up to the sale and also on the sale day. I felt very proud of our members who stepped forward to help and cannot thank you enough. Some travelled a good distance to be there. It was nice to finally meet the President of Milton/Ulladulla, Rod Thomas when he attended the sale. Also

present was our Guest Speaker for next month's meeting, Jane Wright (who will be talking on 'What Judges Look For'). Jane will also be bringing some quality orchids for sale. Also present, David Brooks, our June Day Meeting Guest Speaker who will be talking on 'Cymbidiums'.

P.S. What a surprise to see our Vice President Sandra Ellis's, photo on the front page of the Nowra News. Sandra has retired from her work as a nurse at the Shoalhaven Hospital after 48 years. Congratulations Sandra (alias Captain) for a job well done. Now you will have more time on your hands to spend with your orchids!

Warm regards,
Louise



Current Life Members Shoalhaven Orchid Society

Mr Stuart Crowther - 1999
Mr Alan Stephenson - 1999
Mr Colin Marstin - 2007
Mr John Webb - 2009
Mrs Lynne Phelan - 2012
Mr Allan Taylor - 2014



LIBRARY

Committee has decided to restart the library at meetings starting from the May meeting. More information to follow.

Supper While we are still operating under Covid 19 restrictions members should continue to bring their own cup/mug which you leave on the kitchen counter near the sign for the beverage of your choice – tea or coffee. The eats are provided by members on a voluntary basis and it seems to work if each member contributes a share plate to a few meetings each year.



WISH LIST

Looking for a special plant??

Email Teresa (email address front page) with
Your Name, Phone number & plant name
and I will add it to our newsletter.

Benching Results - April 2021

Category	Plant	Owner
JUNIOR		
NOVICE		
Oncidiinae Alliance	<i>Onc.</i> Unknown	R. Hahn
Miscellaneous orchid	{ <i>Prosthechea cochleata</i> { <i>Zygo.</i> Blue Banks 'Duni'	R. Hahn R. Hahn
Novice Orchid of the Night	<i>Prosthechea cochleata</i>	R. Hahn
INTERMEDIATE		
Australian Native species/hybrid	<i>Den.</i> Regal Gilleston 'One for All' x Hilda Poxon 'Rusty Bucket'	F. Sikora
Species orchid	<i>Stenoglottis longifolia</i>	J. Clarke
Oncidiinae Alliance	<i>Miltassia</i> Charles Fitch 'Izumi'	J. Clarke
Laeliinae Alliance	<i>Lc.</i> Prophecy X <i>Blc.</i> Pamela Heatherington	F. Sikora
Miscellaneous	<i>Phrag.</i> Lunique	J. Harriman
Intermediate Orchid of the Night	<i>Catt.</i> Crispin Rosales	G. Douglass
OPEN		
Paphiopedilum	<i>Paph.</i> Vanda M. Pearman	W. Simmons
Oncidiinae Alliance	<i>Onc.</i> Unknown	H. Douglass
Dendrobium Alliance	<i>Den.</i> Andree Miller	H. Douglass
Laeliinae Alliance	<i>Catt.</i> Crispin Rosales	H. Douglass
Vandaceous	<i>Phal.</i> Unknown	G. Jonas
Species	<i>Paph.</i> <i>sukhakulii</i>	W. Simmons
Australian Native species	<i>Diplodium revolutum</i>	A. Stephenson
Cymbidium	<i>Cym.</i> Dave's Dream 'Daffodil'	L. Gannon
Miscellaneous orchid	<i>Masd.</i> Peppermint Glow 'Beenak'	B. Phelan
Open Orchid of the Night	<i>Catt.</i> Crispin Rosales	H. Douglass
Orchid Species of the Night*	<i>Onc. forbesii</i>	B. Phelan
Orchid Hybrid of the Night*	<i>Masd.</i> Peppermint Glow 'Beenak'	B. Phelan
Seedling	<i>Catt.</i> Precious Jewel 'Tiki' x <i>S. coccinea</i>	D. Hogan
Growing Competition <i>Laelia anceps</i> 'Wallbrunn' x <i>L. anceps</i> 'Rosminah'	1st. Diane Slye 2nd. Francoise Sikora 1 point to : J. Clarke, L. Cowell, J. Clancy, S. Ellis, D. Hogan, G. Jonas, B. Phelan, L. Phelan, B. Smythe, N. Weatherby, K. Wynn, S. Wynn, Y. Young	

BENCHING YOUR ORCHIDS AT A MEETING.

The Benching Marshal thanks members for ensuring that benching was completed in a timely manner at recent meetings. Please make sure all plants are benched in their correct sections **before 7.00pm**. If you are not sure where to put a plant please ask Don or another Open grower. If you are bringing in lots of plants please arrive early so you have time to complete benching before 7.00pm.

JUDGING RESULTS FOR APRIL 2021

Congratulations to all



Novice Orchid of the Night - *Prosthechea cochleate* R. Hahn



Intermediate Orchid of the Night - *Catt. Crispin Rosales* G. Douglass



Species Orchid of the Night - *Onc. Forbesii* B. Phelan



Seedling - *Catt. Precious Jewel 'Tiki' x S. coccinea* D. Hogan



Jan, our Guest Speaker and Judge.



Growing Comp. display

The Jewel Orchid

Lynne Phelan

A number of different orchid species are referred to as 'Jewel Orchids' but the most common are *Anoectochilus* [An-eck-toe-KYE-luss], *Macodes* [ma-KO-deez] and *Ludisia* [loo-DIS-ee-ah] with perhaps the last, *Ludisia discolor*, the one most often grown. These orchids are usually grown for their attractive foliage rather than the flowers. The intricately patterned leaves can be red, green or almost black and are often quite velvety in texture. They are terrestrials and grow on the forest floor in moist, shady areas in many countries across Asia and the Pacific.



Anoectochilus-roxburghii

Light

Medium to low light levels are best; avoid direct, bright sunlight which will cause the leaf colour to fade. Similarly, avoid deep gloom as the plants will not thrive in very low light areas.

Watering

These orchids like to be kept damp so how much and when to water will depend on where your orchid is housed. If there is plenty of humidity then the frequency of watering will be reduced but if it is in the open area exposed to the wind then it may need daily top-ups, especially if it is in a shallow saucer. Never allow it to dry out completely for any length of time.



Anoectochilus formosanus

Potting Media

They are terrestrials and need to be grown in a terrestrial mix rather than an open orchid mix suitable for epiphytes. Ordinary, good quality houseplant potting mix with some added perlite (60/40 ratio) is suitable; the perlite will assist drainage. Alternatively, just use an African Violet mix. They like to be kept lightly damp but not wet so the mix needs good drainage.

Fertilising

These are not 'hungry' orchids; monthly feeding using a generic pot plant fertiliser or your normal half-strength orchid fertiliser should suffice. In winter when they are not growing strongly the fertiliser can be withheld.



Macodes Petola

Repotting

These orchids tend to spread out rather than up so a wide, shallow container is best. As with any orchid, remove the old media and carefully work the fresh media around the roots.

Propagation

The stems are quite brittle and can easily break when you handle these orchids so it's common to propagate through stem cuttings when you are repotting the main plant. Nothing special is needed; with a sterile knife remove a piece of stem with upper leaves attached and pot it up into a similar potting mix as the parent. New roots should develop within a month or two but be careful until this happens as the new plant won't be well anchored into whatever growing media you've chosen so it can be bumped out easily. You can put a few ties across the top of the pot to hold the plant stable until the roots bed into the mix. Alternatively, put the stem cutting into a container of water and it will generally develop roots after a time. It can then be potted on. Change the water regularly to avoid the fleshy stem rotting.

TIP

If growing purely for the foliage pinch out any flower shoots and this will help to keep the plant more dense and compact.



Ludisia discolor

May Novice Corner

Gary Jonas will be speaking about growing and caring for Phalaenopsis orchids. These are very popular orchids, so don't miss this one.



Don't forget we have a Facebook page! This is a great way to showcase your orchids between meetings.

Let's face it, our beautiful orchids don't always make an appearance at the right time for meetings. Post your orchids on Facebook so we can all admire them.



Some members would like to know who this little beauty belongs to. Is it yours? Let me know so that I can pass it on!



NOVICE CORNER

Between 7pm and 7.15pm newer growers can speak to experienced grower. Any problem orchid for advice on? (Please bring it in plastic bag if you suspect it has a disease or pest problem.) Remember, there's no such thing as a '*dumb orchid question*'!

John Clancy is our Novice Corner Coordinator. Members who have a cultural problem or any questions about their orchids are invited to speak to **John** during Novice Corner. If it is not within John's area of expertise he will refer you to another grower who may be able to help. If there is a particular topic you would like to have covered in Novice Corner please feel free to contact John on 4443 9072 or email

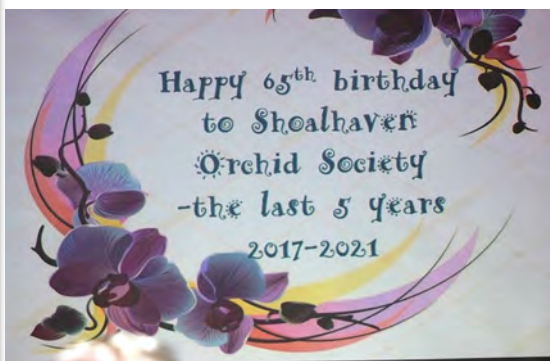
The Society's Website

Barbara Simmons is our wonderful website designer and editor. Barbara offers her services for free, never asking for payment. Thank you so much Barbara, your generosity is without doubt amazing and appreciated. Louise presented Barbara with a small token of appreciation on behalf of all of us.



65th Anniversary

Celebrating 65 years in 2021



Presentation by Lynne Phelan of the last 5 years



Thank you to Mary Ahonen for the beautiful celebratory cake with the Society's orchid emblem *Cymbidium* Shoalhaven
'Touch of Class'



Life members Col Marstin, Lynne Phelan and Alan Stephenson cutting the cake.

Phil's Plant Sale



Illawarra Orchid Society and Shoalhaven Orchid Society members gathered together and hard at work preparing plants for the sale day.

The sale was well attended at Kim Harrington's home on 24th April 2021 and was a great success. Weather was great and many orchid buyers went home very pleased with their purchases.

Upcoming Events



Illawarra orchid society has kindly invited SOS members to join them on a bus trip to Mingara Orchid Show on **Saturday the 26th June**. Details are as follows:

Leaves from Wollongong railway, Piccadilly car park side at 7.30am returning at approx 5pm.

Cost \$25.00 per person. If time allows they will stop in at Royale Orchids on the way home.

There are only 10 seats available for SOS and RSVP is strictly by 14th June to Illawarra - **Please let Françoise know asap..**

National Orchid Extravaganza

6-8 August

Southern Orchid Spectacular

24th - 26th October 2021

BBOFS

Winter Show - 17th - 18th July
Spring Show - 4th - 5th September
Native Show - 16th - 17th October

Mingara Orchid Club Inc.

Fair & Show

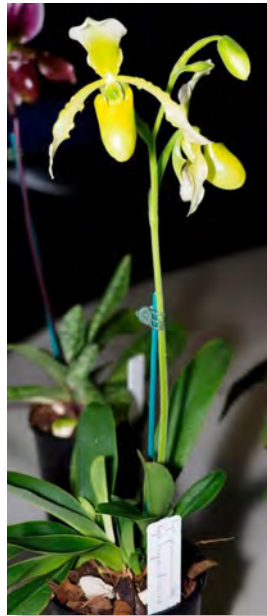
26th - 27th June

St Ives Orchid Fair

13th, 14th, 15th August

MUOS

Winter Show - 3rd - 4th July
Spring Show - 11th - 12th September
Native Show - 16th October



Who invited him?

THANK YOU TO OUR GENEROUS SPONSORS

We encourage you to support them.



BISHOPS
EVERYTHING FOR PLANTS & ANIMALS

WE STOCK AN EXTENSIVE PRODUCT RANGE FOR
ALL
YOUR ORCHID NEEDS

- ✂ Campbell's Orchid Fertilizer ✂ Clear Phalaenopsis Pots
- ✂ White and Coloured Labels ✂ Range of Orchid Growing Media...

AND MORE!

Take advantage of your VIP Customer Pricing
PHONE FOR DELIVERY OR VISIT US AT 21 BELLEVUE ST,
SOUTH NOWRA
Ph: 4423 2359 Fax: 4423 7180



BAKEHOUSE
Delights

110 SHOP 6 KALANDAR ST EAST NOWRA NSW 2541
PH 02 44223438 FAX 02 44223869



Bunnings BBQ



Thank you to Yvonne and Sandra for your expert organizational skills and thank you to all who helped on the day. Without volunteer support we would not be able to achieve the terrific outcome for the Society.

What's on at a Glance

COMMITTEE MEETINGS 2021

2nd March 2021	3rd August 2021
6th April 2021	7th September 2021
4th May 2021	5th October 2021
1st June 2021	2nd November 2021
6th July 2021	7th December 2021

GENERAL MEETINGS 2021

17th May

19th June }

17th July } Saturday Day Meetings

21st August } 10am – 1pm

20th September

18th October

15th November

SOCIETY SHOWS 2021

SOS Inc. **Winter Show** Saturday 10th July

SOS Inc. **Spring Show** Saturday 4th September

SOS Inc. **October Show** Saturday 23rd October

COMING EVENTS

Possible home visit - TBA

August - Charity Orchid Auction

2021 GUEST SPEAKERS

May - Jane Wright - "What judges look for"

June - David Brooks - 'Cymbidiums'

August - TBA

September - Mitch Kernaghan - Australian Natives

October - TBA

November - Gary Hart - Paphiopedilums

2021 GROWING COMPETITION

Please try to find and bring your growing competition plant each month. If you keep them grouped together with a distinctive coloured label it makes them easy to find. Let's give Lawrie a bit of competition this year!

May - Sarc. Elegance 'Super' x Sarc. Sweetheart 'Speckles'

June - Den. Australian Obsession 'Purple Paddle Pop' x Den. Starsheen 'Botanic Fireworks'

July - Laelia anceps 'Wallbrunn' x L. anceps 'Rosminah'

August - Sarc. Elegance 'Super' x Sarc. Sweetheart 'Speckles'

September - Den. Australian Obsession 'Purple Paddle Pop' x Den. Starsheen 'Botanic Fireworks'
Last Benching

October - Laelia anceps 'Wallbrunn' x L. anceps 'Rosminah'

November - Sarc. Elegance 'Super' x Sarc. Sweetheart 'Speckles'

December - TBA

***Note:** 'Rosminah' is the spelling used by the hybridiser, Cal Orchids.



PARKING AT BOMADERRY COMMUNITY CENTRE

A reminder to members that the two parking spaces nearest to the rear door of the Community Centre are reserved for our less mobile members.



FOR SALE

Orchiata Bark - \$34 a bag - 9-12mm and 12-18mm.

Please see Sharon Wynn.



FREE

Assorted Decorative Pots

- Unused except for outer pots for benching. Please contact Brian Phelan on 0447 348 144

