

Shoalhaven Orchid Society Inc.

PATRON

The Hon. Shelley Hancock

PRESIDENT

Louise Gannon

lougannon@bigpond.com

Ph 0419 241 177

VICE PRESIDENT

Sandra Ellis

pollyellis@outlook.com

SECRETARY

Francoise Sikora

fsfrancoise@gmail.com

TREASURER

Tom Gablonski

tom@gablonski.org

COMMITTEE

John Clancy; John Clarke,
Ron Findlater; John Harri-
man; Don Hogan; Val Starling

EDITOR

Lynne Phelan

phelan.landb@gmail.com

AFFILIATED WITH

the Australian Orchid Council and the Orchid Society of N.S.W.

www.shoalhavenorchidsociety.org.au

Email: shoalhavenorchidsociety@gmail.com

PO Box 1022 Nowra NSW 2541



Shoalhaven Orchid Society Inc.



Cymbidium Shoalhaven

'Touch of Class'

NEWSLETTER APRIL 2022



GUEST SPEAKER - Brian Phelan will be talking about how he grows his cool growing miltoniopsis, masdevallias, and ondontoglossums - all orchids that are mostly found at home in the mountainous cloud forests in Central and South America. So, how do we replicate that in our coastal greenhouses? With some difficulty ... but come along and hear the voice of experience and get the tips that may convince you to add some of these beautiful orchids to your collection.

SOCIETY INFORMATION

VENUE: BOMADERRY COMMUNITY CENTRE
19 BIRRILEY STREET, BOMADERRY.

NEXT MEETING Monday 18 April 7.00pm

Meeting room is open at 6.30pm

Benching to be **finished** by 7.00pm.

Novice Corner 7.00 – 7.15pm

Popular Vote 7.15 – 7.30pm

Meeting opens 7.30pm.

FROM THE EDITOR'S DESK

I hope you are enjoying the new treasures you won at the auction last month. What a fantastic selection of plants there was on offer. Good to see two new members stocking up on lots of locally grown plants, many of which were flowering size. Any auction plants flowering for the October Show will be eligible to be benched as you will have owned them for more than six months. Sadly, our other shows are too soon but you can bring them to meetings and display them in a special 'Owned less than 6 months; not for judging' section.



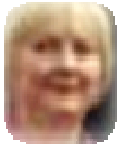
Did you know? What is the difference between *Miltonia* and *Miltoniopsis*?

***Miltoniopsis* have but one leaf at the apex of the pseudobulb whereas *Miltonia* have two;** the pseudobulbs of *Miltoniopsis* are rounded, laterally compressed, and clustered tightly together whereas *Miltonia* pseudobulbs are more elongate and more widely spaced.

NOVICE CORNER Committee member, **John Clancy**, is the co-ordinator and members who have a cultural problem or any questions about their orchids are invited to speak to John during Novice Corner. If it is not within John's area he will refer you to another grower who may be able to help. If there is a particular topic you would like to have covered in Novice Corner please feel free to contact John on 44439072 or email john.clancy50@me.com.

THE SHOALHAVEN ORCHID SOCIETY MEETS ON THE **THIRD MONDAY** OF THE MONTH- at **7.00 PM** IN THE BOMADERRY COMMUNITY CENTRE, 19 BIRRILEY STREET, BOMADERRY.

The Shoalhaven Orchid Society disclaims any liability for losses which may be attributed to the use of any of the material mentioned in this newsletter.



PRESIDENT'S REPORT

I hope you all fared well through the rain and winds we have had recently.

One thing the orchid experts tell us is that orchids don't like wet feet. Unless your orchids are grown under a solid cover there is no way of avoiding your orchids from getting rained on.

My orchids are in a shadehouse and I have noticed with my cymbidiums a few yellow/brown leaves which I remove and then check the firmness of the pseudo bulb underneath. If soft, I repot the orchid in clean mix, with the rotted section removed. Sometimes you can smell a particular rot before you notice the plant deteriorating as it really does have a distinctive unpleasant smell. Fortunately, I have not had that since leaving Sydney. Having a good open orchid mix, good air-movement and your orchids not too close together helps the orchids dry out more quickly.

My cymbidiums and cattleyas are producing spikes now and it's always exciting to see spikes appearing on your favourite orchids.

Last month's Members' Auction went well with a variety of orchids sold. It is a great way to add to your collection at a good price. Thank you Richard, for being our auctioneer and also thanks to members who assisted.

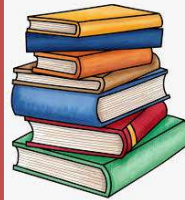
Thank you to Milton/Ulladulla Orchid Society President, Rod Thomas, and committee for inviting our members on their planned bus trip to Orchids Out West on Friday 27th May. Twelve of our members have indicated that they would like to go. This is the first big orchid event since the beginning of Covid and I am sure will prove very popular.

Looking forward to Brian Phelan's April Meeting talk on cool growing species including masdavallias and miltoniopsis.

Warm regards,
Louise

Current Life Members Shoalhaven Orchid Society

Mr Stuart Crowther - 1999
Mr Alan Stephenson - 1999
Mr Colin Marstein - 2007
Mr John Webb - 2009
Mrs Lynne Phelan - 2012
Mr Allan Taylor - 2014
Mr Brian Phelan - 2022



Books! Books! Books!

Our society has many great books for you to borrow!!

Speak to Robin Gunter who would be delighted to help you

Attendance Book

Members and guests must sign the attendance book. This is required for insurance purposes.

If you don't sign, you're not covered.

Please sign beside your number given by the society.

Workshop Novices Corner

Between 7pm and 7.15pm newer growers can speak to experienced grower. **April: *John will demonstrate how to divide and repot a Cattleya.***

Any problem orchid for advice on? (Please bring it in plastic bag if you suspect it has a disease or pest problem.) Remember, there's no such thing as a 'dumb orchid question'!



WISH LIST

Looking for a special plant??

Email Lynne (front page for address) with

Your Name, Phone number & plant name

and I will add it to our newsletter.

See Back Page for your Wishes...

IMPORTANT NOTICE

about your Bishop's discount card

A new discount card will be issued when you renew your membership. Please bring your old card to the meeting to exchange for the new card. Treasurer Tom has the new cards.



Easter Promotion at Bunnings

Louise and Françoise had an 'Awareness Table' at a recent Bunnings Easter event. They were able to hand out flyers and talk to interested members of the public to promote our society and the forthcoming winter show. The society received a \$50 gift card from Bunnings. Members appreciate our president and secretary giving up their time on a Saturday to support the society. I hope the Easter Bunny had a present for them.

Society shirts are available again.

Please see Françoise for details. They will need to be ordered online as the Embroidery Shack no longer has a shop front.



You are never too old to learn...

I have always advocated trimming off any broken roots when repotting but an article in a recent American orchid magazine caused me to rethink. Quote "...do not worry if the root breaks in the [repotting] process. Simple breaks will heal and the root will continue to function."

Orchid roots have a coating of velamen that surrounds and protects the true root which is that fine stringy bit you see remaining when roots rot. Provided the true root is undamaged, I believe the velamen would heal itself and the root would continue to function. The break would, however, make it vulnerable to bacterial or fungal infection so you would need to guard against that. **Lynne**

The Society thanks our generous Sponsors

We encourage you to support them.




WE STOCK AN EXTENSIVE PRODUCT RANGE FOR ALL YOUR ORCHID NEEDS

- ♂ Campbell's Orchid Fertilizer ♂ Clear Phalaenopsis Pots
- ♂ White and Coloured Labels ♂ Range of Orchid Growing Media... AND MORE!

Take advantage of your VIP Customer Pricing
PHONE FOR DELIVERY OR VISIT US AT 21 BELLEVUE ST, SOUTH NOWRA

Ph: 4423 2359 Fax: 4423 7180



**SHOALHAVEN
ZOO**



110 SHOP 6 KALANDAR ST EAST NOWRA NSW 2541
PH 02 4423438 FAX 02 4423869



Benching Results - March 2022

Category	Plant	Owner
JUNIOR		
NOVICE		
Oncidiinae Alliance	<i>Brassia</i> Rex	D. Slye
Laeliinae Alliance	<i>Blc.</i> Makala Gold x <i>C.</i> Chocolate Drop	T. Gablonski
Miscellaneous orchid	<i>Masd.</i> Lightning Stripes	D. Slye
Novice Orchid of the Night	<i>Brassia</i> Rex	D. Slye
INTERMEDIATE		
Species orchid	{ <i>Ency. (Prosthechea) cochleata</i> { <i>Gongora galeata</i>	J. Clarke F. Sikora
Oncidiinae Alliance	<i>Oda.</i> Pacific Paranoia	F. Sikora
Miscellaneous	<i>Bulbo.</i> Gardiner Heather	J. Harriman
Intermediate Orchid of the Night	<i>Gongora galeata</i>	F. Sikora
OPEN		
Paphiopedilum	<i>Paph.</i> Prime Child	W. Simmons
Oncidiinae Alliance	<i>Odm.</i> Augres x <i>Odm. pescatorei</i>	B. Phelan
Laeliinae Alliance	<i>Catt.</i> Wimema	L. Gannon
Vandaceous	<i>Phal.</i> Unknown	G. Jonas
Species	<i>Den. macranthum</i>	R. Korber
Miscellaneous	<i>Masd.</i> Copper Wing	B. Phelan
Open Orchid of the Night	<i>Den. macranthum</i>	R. Korber
Orchid Species of the Night	<i>Den. macranthum</i>	R. Korber
Orchid Hybrid of the Night	<i>Catt. Wimema</i>	L. Gannon
Growing Competition Den. Australian Colourfest 'Nutbag' x D. Stoney Point 'Yum Yum'	1st Brian Shelvey, 2nd John Clarke , 1 point each to: J. Cameron, S. Ellis, R. Findlater, L. Gannon, R. Gunter, R. Hahn, D. Hogan, R. Korber, L. Phelan, F. Sikora, D. Slye, N. Weatherby, Y. Young	
March Growing Comp. <i>Laelia anceps</i> 'Wallbrunn' x <i>L. anceps</i> 'Rosminah'	1st Dianne Slye, 2nd Yvonne Young , 1 point each to: B. Phelan, L. Phelan, B, Shelvey, J. Clarke, R. Hahn.	

Popular Vote Reminder

All plants benched must have a benching card with the name of the orchid on the front and the owner's name on the back. To avoid benching delays, **please fill in the cards before you come to the meeting.** The template or supplies of the benching card are available from Francoise.

Note – for the Growing Competition there is no need to write the name of the orchid; just put your name on the back. You will still need to have your name on a tag in the pot.

JUDGING RESULTS FOR MARCH 2022

CONGRATULATIONS TO ALL



Novice Popular Vote-Diane Slye - *Brassia Rex*



Intermediate Popular Vote - Francoise Sikora - *Gongora galeata*



Open Orchid of the Night and Best Species
Richard Korber - *Dendrochilum macranthum*



Bets Hybrid of the Night - Louise Gannon
Cattleya wimema



Trichopilia marginatum: Brian P.

Thanks to Yvonne Young for all
the photographs.

STAKING CYMBIDIUMS by Alan Hope

Reprinted from the Orchid Societies of Victoria website.

Those of you who have cymbidiums in spike will have noticed that many of the spikes are now extending at a fairly rapid pace. Once they reach a length of about 200mm they may be staked. However, you must use your discretion, because some spikes need to develop more fully to provide enough flexibility to allow staking, tying and training. In fact, some varieties cannot be effectively trained at all, and you will need to allow the spike to follow its natural inclination.

Flower spikes seem to fit into three categories. Those that grow relatively **straight** and upright, those that have an **arching** habit and those that are **pendulous**. Many of the *Cymbidium devonianum* hybrids, such as *Cymbidium* Bulbarrow, fall into the last category, as do some of the good green and red large and intermediate flowered cymbidium hybrids. The only advice that can be given is to let the spikes do their own thing and allow them to cascade. Sometimes the emerging spike will decide to follow the surface of the compost or to try to burrow into it and you will need to correct this problem. An effective solution is to place one end of a plastic label under the emerging spike and the other end on the rim of the pot. This creates an upward-sloping ramp that the flower spike will follow over the rim.

For relatively **straight** spikes insert a stake away from the edge of the pot and in a position where you imagine the flowers will be seen to their best advantage. Try to work from a position either in front of or behind the spike to reduce the chance of catching a sleeve on the buds and breaking them off. Start tying at the base of the spike using one of the soft plastic-and-wire twisty-ties and progress towards the top. Avoid forcing the spike at this stage, as you may break it. Do not use any more ties than you feel are necessary, as the judges may penalise excessive tying. You may consider removing some of the ties once you have transported your plant to the meeting or show.

An effective way of straightening a leaning spike into an upright position is to use a long piece of twisty tie, which you can tighten gradually every few days. Some growers attach a piece of hat elastic to the spike below the topmost bud and fasten the other end of the elastic to a clothes peg clipped onto a long stake. The clothes peg is slid up the stake until the elastic is just taut, so that the spike is gradually straightened. The clothes peg needs upward adjustment every few days. When the spike has stopped growing, tie it as described above.

Other growers place a horizontal wire above the plants and hitch the spike to this with elastic or with spring-loaded 'yo-yos'. In either case care is required as the topmost buds can easily be broken off if too much force is applied. Leave the spike to 'set' in its final position, otherwise it will have little strength and may droop, or even break, when the elastic is eventually removed.

For those spikes with an **arching or decorative habit**, insert the stake at the desired angle and tie only up to the start of the curvature or arch. Keep the tie at



Upright racemes. A display by local commercial orchid growers at the 2012 Winter Show at Berry.



Cym. lowianum - arching habit. Note the ugly, thick stake protruding above the raceme. Use unobtrusive stakes and ties.



John Webb's *Cym. Cricket* - pendulous habit. It doesn't need staking but it may benefit from spacing to avoid overlapping racemes.

Cont. Page 8



Auction Night



MARCH 2022 - THE AUCTION, ETC.



Sandra and Di enjoy a joke



Wayne Simmons' lovely mini
Paph. barbegeorum



Lynne and Brian using the virus test kit



John Harriman's *Epidendrum
porpax*



The boys line up!



2022 Shoalhaven Orchid Society

Committee Meetings 2022

2 May, 1.00pm

Society Meetings 2022

18th April Brian Phelan Cool growing species including masdavallias & miltoniopsis.

16th May Guest speaker **Jan Robinson**
Topic Some Easy-to grow Orchids

Saturday Day Meetings 10am – 1pm

18th June Richard Dimon from Sutherland OS on Native Orchid Conservation.

16th July Guest Speaker **Gary Hodder** on Deciduous Dendrobiums

20th August **Mini Charity Auction**

19th September Guest speaker **Mitch Kernaghan** on Australian Native Orchids

17th October **Gavin Curtis** on Callista Dendrobiums

21st November Guest speaker **David Brooks** on Cymbidiums

19th December TBA

Society Shows 2022

SOS Inc. Winter Show Saturday 9th July

SOS Inc. Spring Show Saturday 3rd September

SOS Inc. October Show Saturday 22nd October

Society Coming Events

Bus Trip TBA

Roving Day –21st May. Saturday 21 May. Visit to see the orchid collections of Brian and Lynne Phelan, John Harriman and John Clancy. Further details in next newsletter.

Native Orchid Walk- Sept. 24th

Potting Day– October 15th

Other Orchid Events

Collectors Plant Fair April 9th-10th

Orchids Out West 27th-29th May TBC

Mingara Orchid Fair and Show 25th-26th June

St Ives Orchid Fair 19th - 21st August

Paphiopedilum and Cymbidium Show 12th– 14th August (now at Yagoona)

Australian Native Orchid Show Revesby 11th Sept.

Growing Competition 2022

Please try to find and bring your growing competition plant each month. If you group them with a distinctive coloured label they are easy to find.

April. *Rlc.* Dal's Ambition 'Tara' x C. Aloha Case 'Ching Hua' **First benching so let's all try to bring it in.**

May. *Laelia anceps* 'Wallbrunn' x *L. anceps* 'Rosminah'

June. *Den.* Australian Colourfest 'Nutbag' x Stoney Point 'Yum Yum'

July. *Rlc.* Dal's Ambition 'Tara' x C. Aloha Case 'Ching Hua'

August *Laelia anceps* 'Wallbrunn' x *L. anceps* 'Rosminah'

September *Den.* Australian Colourfest 'Nutbag' x Stoney Point 'Yum Yum'

October. *Rlc.* Dal's Ambition 'Tara' x C. Aloha Case 'Ching Hua'

November. *Laelia anceps* 'Wallbrunn' x *L. anceps* 'Rosminah' **(Last Benching)**

December. *Den.* Australian Colourfest 'Nutbag' x Stoney Point 'Yum Yum'

Staking Cymbidiums Cont. from P.6.

this point looser than usual to allow the spike to move around a little as it grows, otherwise the weight of the developing buds may cause the stem to kink at the position of the last tie and eventually to snap. With arching spikes it is necessary to let the spike develop its own strength, that is, to be largely self-supporting. However, it's a good idea to position and tie a temporary stake away from the main stem to support the arching section before transporting such plants to a meeting or show, as arching spikes are easily broken in transit.*

Finally, remember to stake your spikes later in the day when the sap is flowing, rather than early on a cold morning when the stems will be brittle and easily snapped.

***Editor's note:** I use a bendable wire that I shape along the curve of the raceme to support it.